

Product datasheet for **TA384082S**

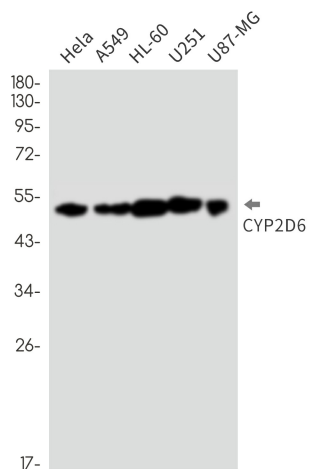
Cytochrome P450 2D6 (CYP2D6) Rabbit Monoclonal Antibody [Clone ID: R07-3G8]

Product data:

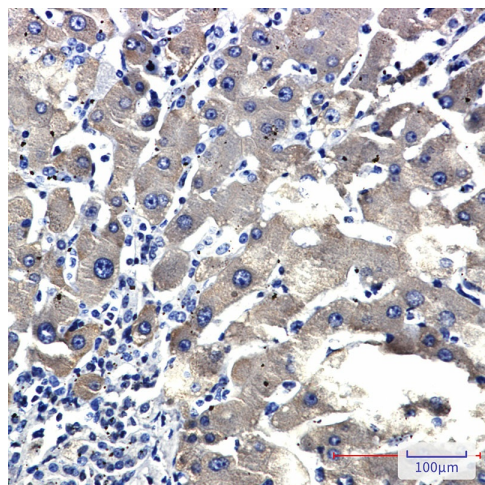
| | |
|-------------------------|------------------------------------------------------------------------------------------|
| Product Type: | Primary Antibodies |
| Clone Name: | R07-3G8 |
| Applications: | IF, IHC, WB |
| Recommended Dilution: | WB: 1/1000 IHC: 1/100 ICC/IF: 1/200 |
| Reactivity: | Human |
| Host: | Rabbit |
| Isotype: | IgG |
| Clonality: | Monoclonal |
| Immunogen: | Recombinant protein of human CYP2D6 |
| Formulation: | 50mM Tris-Glycine(pH 7.4), 0.15M NaCl, 40% Glycerol, 0.01% Sodium azide and 0.05% BSA |
| Concentration: | lot specific |
| Purification: | Affinity Purified |
| Conjugation: | Unconjugated |
| Storage: | Store at 4°C short term. Aliquot and store at -20°C long term. Avoid freeze/thaw cycles. |
| Stability: | 1 year |
| Predicted Protein Size: | Calculated MW:56 kDa,Observed MW:50 kDa |
| Gene Name: | cytochrome P450 family 2 subfamily D member 6 |
| Database Link: | Entrez Gene 1565 Human P10635 |
| Synonyms: | CPD6; CYP2D; CYP2D@; CYP2DL1; CYPIID6; MGC120389; MGC120390; P450-DB1; P450C2D; P450DB1 |



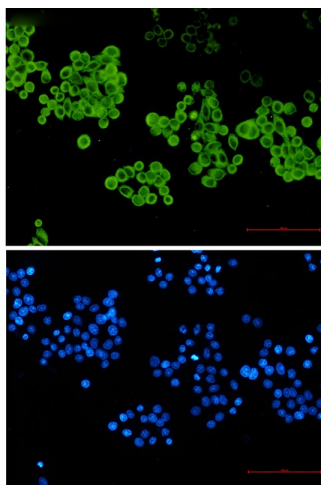
[View online »](#)

Product images:

Western blot analysis of CYP2D6 in HeLa, A549, HL-60, U251, U87-MG lysates using Cytochrome P450 2D6 antibody.



Immunohistochemistry analysis of paraffin-embedded liver cancer using CYP2D6 antibody. High-pressure and temperature Sodium Citrate pH 6.0 was used for antigen retrieval.



Immunocytochemistry analysis of CYP2D6 (green) in hela using CYP2D6 antibody, and DAPI(blue)