

## Product datasheet for **TA384082**

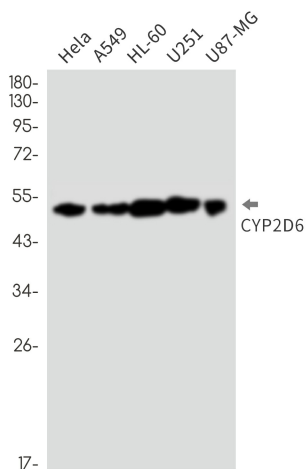
### Cytochrome P450 2D6 (CYP2D6) Rabbit Monoclonal Antibody [Clone ID: R07-3G8]

#### Product data:

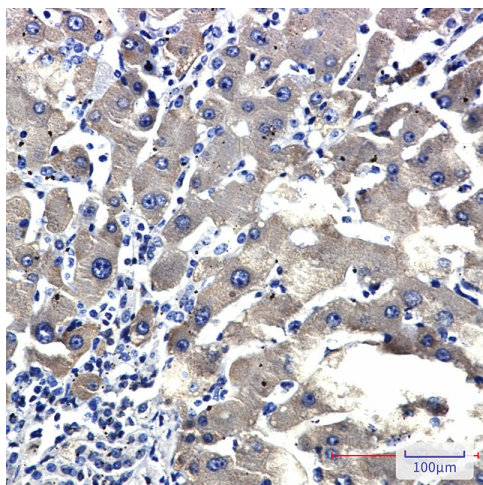
Product Type:	Primary Antibodies
Clone Name:	R07-3G8
Applications:	IF, IHC, WB
Recommended Dilution:	WB: 1/1000 IHC: 1/100 ICC/IF: 1/200
Reactivity:	Human
Host:	Rabbit
Isotype:	IgG
Clonality:	Monoclonal
Immunogen:	Recombinant protein of human CYP2D6
Formulation:	50mM Tris-Glycine(pH 7.4), 0.15M NaCl, 40% Glycerol, 0.01% Sodium azide and 0.05% BSA
Concentration:	lot specific
Purification:	Affinity Purified
Conjugation:	Unconjugated
Storage:	Store at 4°C short term. Aliquot and store at -20°C long term. Avoid freeze/thaw cycles.
Stability:	1 year
Predicted Protein Size:	Calculated MW:56 kDa,Observed MW:50 kDa
Gene Name:	cytochrome P450 family 2 subfamily D member 6
Database Link:	<a href="#">Entrez Gene 1565 Human P10635</a>
Synonyms:	CPD6; CYP2D; CYP2D@; CYP2DL1; CYPIID6; MGC120389; MGC120390; P450-DB1; P450C2D; P450DB1



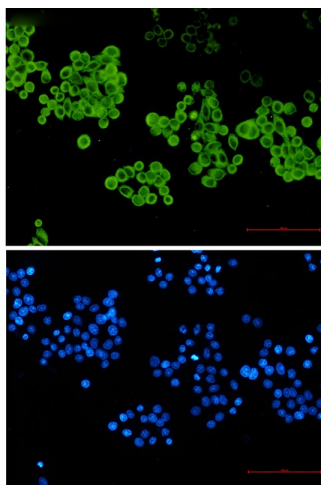
[View online »](#)

**Product images:**

Western blot analysis of CYP2D6 in HeLa, A549, HL-60, U251, U87-MG lysates using Cytochrome P450 2D6 antibody.



Immunohistochemistry analysis of paraffin-embedded liver cancer using CYP2D6 antibody. High-pressure and temperature Sodium Citrate pH 6.0 was used for antigen retrieval.



Immunocytochemistry analysis of CYP2D6 (green) in hela using CYP2D6 antibody, and DAPI(blue)