

## Product datasheet for **TA384081**

### CYP2A6 Rabbit Polyclonal Antibody

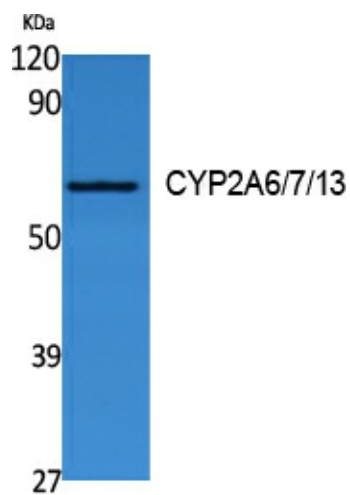
#### Product data:

Product Type:	Primary Antibodies
Applications:	ELISA, WB
Recommended Dilution:	WB: 1/500-1/2000 ELISA: 1/40000
Reactivity:	Human
Host:	Rabbit
Isotype:	IgG
Clonality:	Polyclonal
Immunogen:	Synthesized peptide derived from the Internal region of human CYP2A6/7/13.
Formulation:	Liquid in PBS containing 50% glycerol, 0.5% BSA and 0.02% sodium azide, pH 7.3.
Concentration:	lot specific
Purification:	Affinity Purified
Conjugation:	Unconjugated
Storage:	Store at 4°C short term. Aliquot and store at -20°C long term. Avoid freeze/thaw cycles.
Stability:	1 year
Predicted Protein Size:	Observed MW (kDa):56
Database Link:	<a href="#">P11509</a>
Background:	Swiss-Prot Acc.P11509/P20853/Q16696.



[View online »](#)

## Product images:



Western blot analysis of Cytochrome P450 2A6/7/13 in Jurkat lysates using CYP2A6/7/13 antibody.