

## Product datasheet for **TA384080M**

### **CYP1B1 Rabbit Monoclonal Antibody [Clone ID: R02-5A3]**

#### **Product data:**

Product Type:	Primary Antibodies
Clone Name:	R02-5A3
Applications:	IHC, WB
Recommended Dilution:	WB: 1/2000 IHC: 1/50
Reactivity:	Human, Rat
Host:	Rabbit
Isotype:	IgG
Clonality:	Monoclonal
Immunogen:	Recombinant protein of human CYP1B1
Formulation:	50mM Tris-Glycine(pH 7.4), 0.15M NaCl, 40% Glycerol, 0.01% Sodium azide and 0.05% BSA
Concentration:	lot specific
Purification:	Affinity Purified
Conjugation:	Unconjugated
Storage:	Store at 4°C short term. Aliquot and store at -20°C long term. Avoid freeze/thaw cycles.
Stability:	1 year
Predicted Protein Size:	Calculated MW: 61 kDa; Observed MW: 61 kDa
Gene Name:	cytochrome P450 family 1 subfamily B member 1
Database Link:	<a href="#">Entrez Gene 1545 Human Q16678</a>



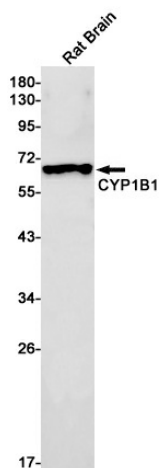
[View online »](#)

**Background:**

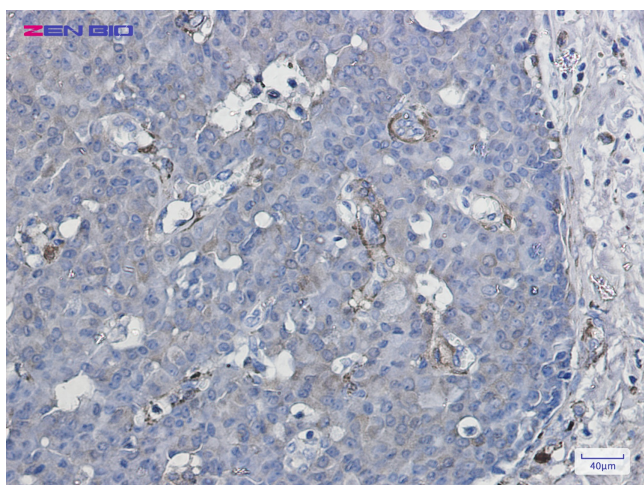
Swiss-Prot Acc.Q16678.Cytochromes P450 are a group of heme-thiolate monooxygenases. In liver microsomes, this enzyme is involved in an NADPH-dependent electron transport pathway. It oxidizes a variety of structurally unrelated compounds, including steroids, fatty acids, retinoid and xenobiotics. Preferentially oxidizes 17beta-estradiol to the carcinogenic 4-hydroxy derivative, and a variety of procarcinogenic compounds to their activated forms, including polycyclic aromatic hydrocarbons. Promotes angiogenesis by removing cellular oxygenation products, thereby decreasing oxidative stress, release of antiangiogenic factor THBS2, then allowing endothelial cells migration, cell adhesion and capillary morphogenesis. These changes are concomitant with the endothelial nitric oxide synthase activity and nitric oxide synthesis. Plays an important role in the regulation of perivascular cell proliferation, migration, and survival through modulation of the intracellular oxidative state and NF-kappa-B expression and/or activity, during angiogenesis. Contributes to oxidative homeostasis and ultrastructural organization and function of trabecular meshwork tissue through modulation of POSTN expression.

**Synonyms:**

CP1B; CYP1B1; GLC3A; OTTHUMP00000201401; P4501B1

**Product images:**


Western blot detection of CYP1B1 in Rat Brain lysates using CYP1B1 Rabbit mAb(1:1000 diluted).Predicted band size:61kDa.Observed band size:61kDa.



Immunohistochemistry of CYP1B1 in paraffin-embedded Human breast cancer tissue using CYP1B1 Rabbit mAb at dilution 1/50