

## Product datasheet for TA384079M

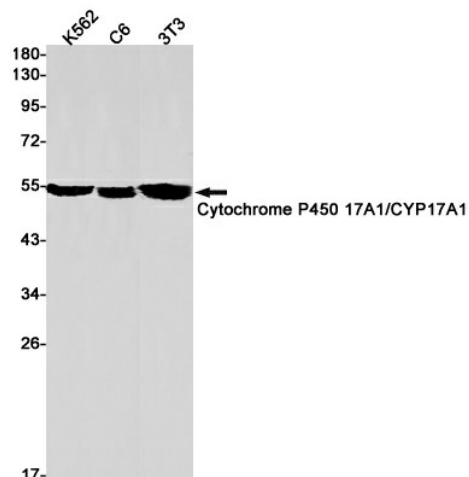
### Cytochrome P450 17A1 (CYP17A1) Rabbit Monoclonal Antibody [Clone ID: R08-2J5]

#### Product data:

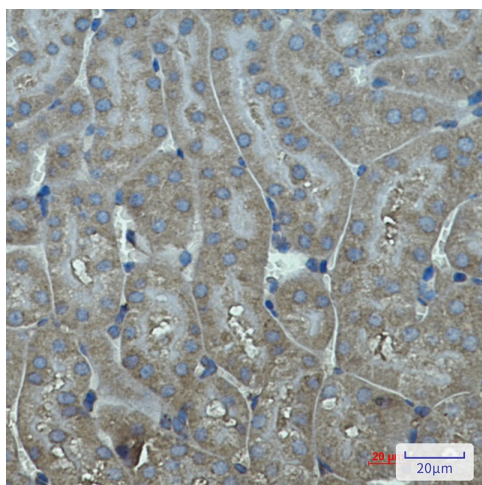
Product Type:	Primary Antibodies
Clone Name:	R08-2J5
Applications:	IF, IHC, IP, WB
Recommended Dilution:	WB: 1/1000-1/5000 IHC: 1/20 ICC/IF: 1/20 IP: 1/20
Reactivity:	Human, Mouse, Rat
Host:	Rabbit
Isotype:	IgG
Clonality:	Monoclonal
Immunogen:	A synthetic peptide of human Cytochrome P450 17A1
Formulation:	50mM Tris-Glycine(pH 7.4), 0.15M NaCl, 40% Glycerol, 0.01% Sodium azide and 0.05% BSA
Concentration:	lot specific
Purification:	Affinity Purified
Conjugation:	Unconjugated
Storage:	Store at 4°C short term. Aliquot and store at -20°C long term. Avoid freeze/thaw cycles.
Stability:	1 year
Predicted Protein Size:	Calculated MW: 57 kDa; Observed MW: 55 kDa
Gene Name:	cytochrome P450 family 17 subfamily A member 1
Database Link:	<a href="#">Entrez Gene 1586 Human P05093</a>
Background:	Swiss-Prot Acc.P05093.Conversion of pregnenolone and progesterone to their 17-alpha-hydroxylated products and subsequently to dehydroepiandrosterone (DHEA) and androstenedione. Catalyzes both the 17-alpha-hydroxylation and the 17,20-lyase reaction. Involved in sexual development during fetal life and at puberty.
Synonyms:	CPT7; CYP17; CYPXVII; P450-C17; P450C17; S17AH


[View online »](#)

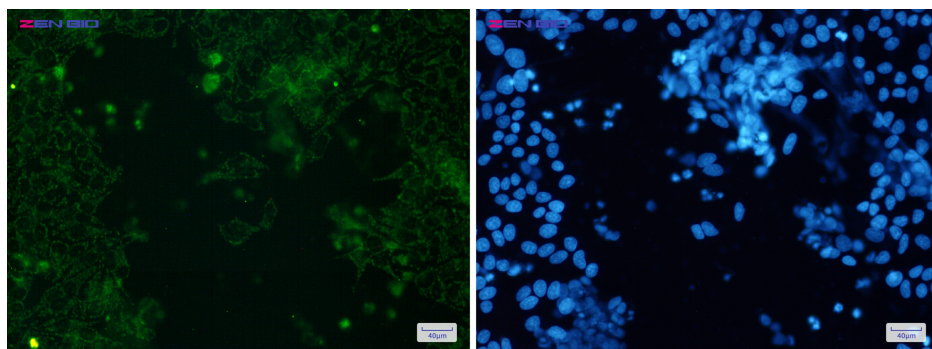
## Product images:



Western blot detection of Cytochrome P450 17A1/CYP17A1 in K562, C6, 3T3 cell lysates using Cytochrome P450 17A1/CYP17A1 Rabbit mAb(1:1000 diluted). Predicted band size: 57kDa. Observed band size: 55kDa.



Immunohistochemistry analysis of paraffin-embedded mouse kidney using Cytochrome P450 17A1 antibody. High-pressure and temperature Sodium Citrate pH 6.0 was used for antigen retrieval.



Immunocytochemistry of Cytochrome P450 17A1 (green) in HeLa cells using Cytochrome P450 17A1 Rabbit mAb at dilution 1/50, and DAPI (blue)