

Product datasheet for **TA384078S**

Cytochrome C (CYCS) Rabbit Monoclonal Antibody [Clone ID: R02-9A7]

Product data:

Product Type:	Primary Antibodies
Clone Name:	R02-9A7
Applications:	IF, IP, WB
Recommended Dilution:	WB: 1/1000 ICC/IF: 1/20-1/50 IP: 1/20
Reactivity:	Human, Mouse, Rat
Host:	Rabbit
Isotype:	IgG
Clonality:	Monoclonal
Immunogen:	A synthetic peptide of human Cytochrome C
Formulation:	50mM Tris-Glycine(pH 7.4), 0.15M NaCl, 40% Glycerol, 0.01% Sodium azide and 0.05% BSA
Concentration:	lot specific
Purification:	Affinity Purified
Conjugation:	Unconjugated
Storage:	Store at 4°C short term. Aliquot and store at -20°C long term. Avoid freeze/thaw cycles.
Stability:	1 year
Predicted Protein Size:	Calculated MW: 12 kDa; Observed MW: 14 kDa
Gene Name:	cytochrome c, somatic
Database Link:	Entrez Gene 54205 Human P99999



[View online »](#)

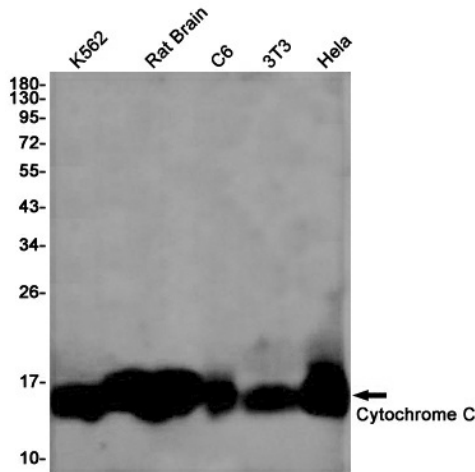
Background:

Swiss-Prot Acc.P99999.Electron carrier protein. The oxidized form of the cytochrome c heme group can accept an electron from the heme group of the cytochrome c1 subunit of cytochrome reductase. Cytochrome c then transfers this electron to the cytochrome oxidase complex, the final protein carrier in the mitochondrial electron-transport chain.Plays a role in apoptosis. Suppression of the anti-apoptotic members or activation of the pro-apoptotic members of the Bcl-2 family leads to altered mitochondrial membrane permeability resulting in release of cytochrome c into the cytosol. Binding of cytochrome c to Apaf-1 triggers the activation of caspase-9, which then accelerates apoptosis by activating other caspases.SitesFeature keyPosition(s)Description

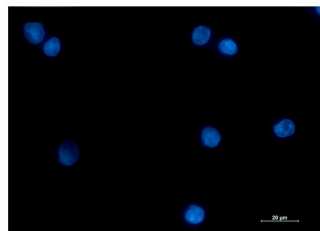
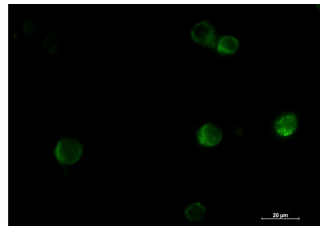
Synonyms:

CYC; HCS; OTTHUMP00000202043; OTTHUMP00000202044; THC4

Product images:



Western blot detection of Cytochrome C in K562,Rat Brain,C6,3T3,HeLa cell lysates using Cytochrome C Rabbit mAb(1:1000 diluted).Predicted band size:12kDa.Observed band size:14kDa.



Immunocytochemistry analysis of Cytochrome C (green) in K562 using Cytochrome C antibody,and DAPI(blue).