

## Product datasheet for **TA384077**

### Cytochrome C (CYCS) Rabbit Monoclonal Antibody [Clone ID: R09-6H3]

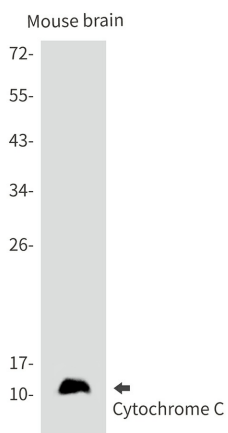
#### Product data:

Product Type:	Primary Antibodies
Clone Name:	R09-6H3
Applications:	IHC, IP, WB
Recommended Dilution:	WB: 1/1000 IHC: 1/50 IP: 1/20
Reactivity:	Human, Mouse, Rat
Host:	Rabbit
Isotype:	IgG
Clonality:	Monoclonal
Immunogen:	A synthetic peptide of human Cytochrome C
Formulation:	50mM Tris-Glycine(pH 7.4), 0.15M NaCl, 40% Glycerol, 0.01% Sodium azide and 0.05% BSA
Concentration:	lot specific
Purification:	Affinity Purified
Conjugation:	Unconjugated
Storage:	Store at 4°C short term. Aliquot and store at -20°C long term. Avoid freeze/thaw cycles.
Stability:	1 year
Predicted Protein Size:	Calculated MW: 12 kDa; Observed MW: 14 kDa
Gene Name:	cytochrome c, somatic
Database Link:	<a href="#">Entrez Gene 54205 Human P99999</a>
Background:	Swiss-Prot Acc.P99999.
Synonyms:	CYC; HCS; OTTHUMP00000202043; OTTHUMP00000202044; THC4



[View online »](#)

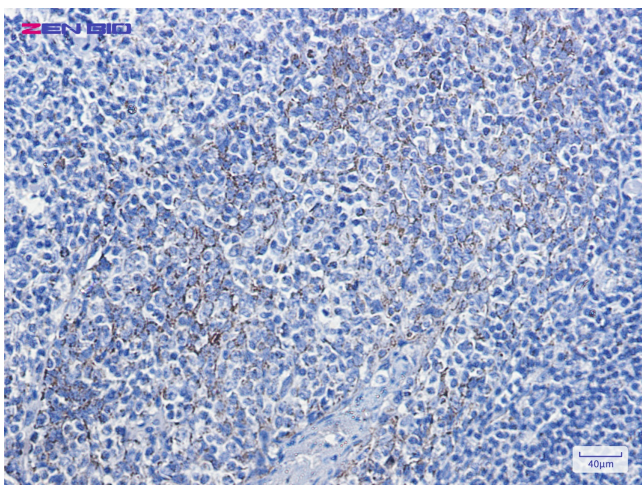
Product images:



Western blot analysis of Cytochrome C in mouse brain lysates using Cytochrome C antibody.



Western blot detection of Cytochrome C in Mouse brain lysates using Cytochrome C antibody. Predicted band size: 12kDa. Observed band size: 14kDa.



Immunohistochemistry of Cytochrome C in paraffin-embedded Human tonsil using Cytochrome C Rabbit mAb at dilution 1/100