

Product datasheet for **TA384076**

Cytochrome C (CYCS) Rabbit Polyclonal Antibody

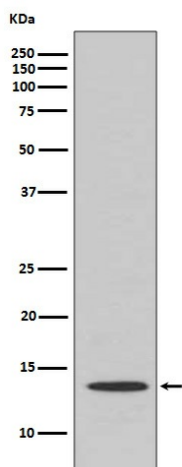
Product data:

Product Type:	Primary Antibodies
Applications:	IF, IHC, IP, WB
Recommended Dilution:	WB: 1/1000-1/2000 IHC: 1/50-1/200 ICC/IF: 1/50-1/200 IP: 1/30
Reactivity:	Human, Mouse, Rat
Host:	Rabbit
Isotype:	IgG
Clonality:	Polyclonal
Immunogen:	A synthesized peptide derived from human Cytochrome C
Formulation:	Rabbit IgG in phosphate buffered saline , pH 7.4, 150mM NaCl, 0.02% sodium azide and 50% glycerol.
Concentration:	lot specific
Purification:	Affinity Chromatography
Conjugation:	Unconjugated
Storage:	Store at 4°C short term. Aliquot and store at -20°C long term. Avoid freeze/thaw cycles.
Stability:	1 year
Predicted Protein Size:	14kDa
Gene Name:	cytochrome c, somatic
Database Link:	Entrez Gene 54205 Human P99999
Background:	Swiss-Prot Acc.P99999.Cytochrome C is a well conserved electron-transport protein and is part of the respiratory chain localized to mitochondrial intermembrane space. Plays a role in apoptosis. Suppression of the anti-apoptotic members or activation of the pro-apoptotic members of the Bcl-2 family leads to altered mitochondrial membrane permeability resulting in release of cytochrome C into the cytosol.
Synonyms:	CYC; HCS; OTTHUMP00000202043; OTTHUMP00000202044; THC4

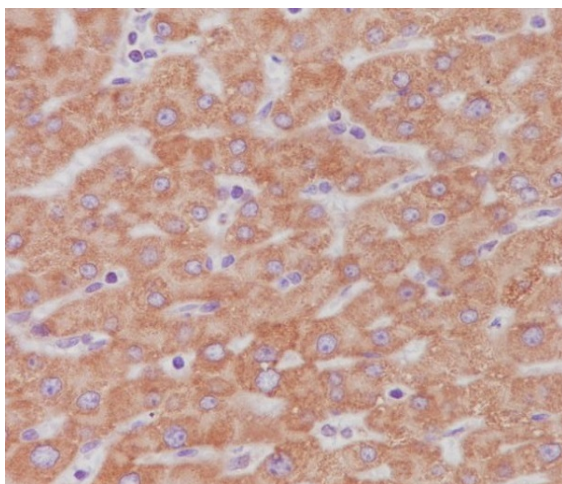


[View online »](#)

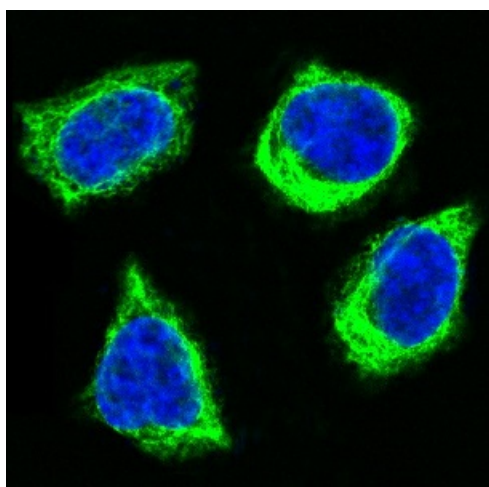
Product images:



Western blot analysis of Cytochrome C in Human kidney lysates using Cytochrome C antibody.



Immunohistochemistry analysis of paraffin-embedded Human liver using Cytochrome C antibody. High-pressure and temperature Sodium Citrate pH 6.0 was used for antigen retrieval.



Immunofluorescence analysis of Cytochrome C in Hela using Cytochrome C antibody.