

## Product datasheet for **TA384073M**

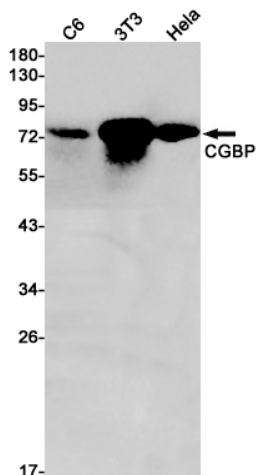
### **CGBP (CXXC1) Rabbit Monoclonal Antibody [Clone ID: R06-4K1]**

#### **Product data:**

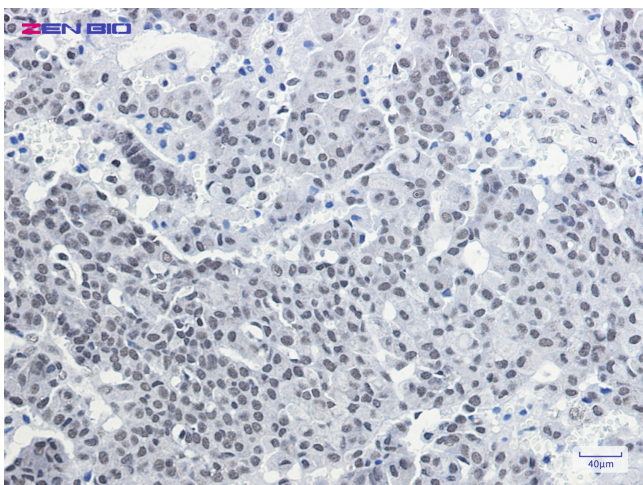
Product Type:	Primary Antibodies
Clone Name:	R06-4K1
Applications:	IF, IHC, IP, WB
Recommended Dilution:	WB: 1/1000 IHC: 1/200 ICC/IF: 1/50 IP: 1/20
Reactivity:	Human, Mouse, Rat
Host:	Rabbit
Isotype:	IgG
Clonality:	Monoclonal
Immunogen:	A synthetic peptide of CGBP
Formulation:	50mM Tris-Glycine(pH 7.4), 0.15M NaCl, 40% Glycerol, 0.01% Sodium azide and 0.05% BSA
Concentration:	lot specific
Purification:	Affinity Purified
Conjugation:	Unconjugated
Storage:	Store at 4°C short term. Aliquot and store at -20°C long term. Avoid freeze/thaw cycles.
Stability:	1 year
Predicted Protein Size:	Calculated MW: 76 kDa; Observed MW: 76 kDa
Gene Name:	CXXC finger protein 1
Database Link:	<a href="#">Entrez Gene 30827 Human Q9P0U4</a>
Background:	Swiss-Prot Acc.Q9P0U4.Transcriptional activator that exhibits a unique DNA binding specificity for CpG unmethylated motifs with a preference for CpGG.
Synonyms:	2410002I16Rik; 5830420C16Rik; CFP1; CGBP; hCGBP; HsT2645; PCCX1; PHF18; SPP1; ZCGPC1


[View online »](#)

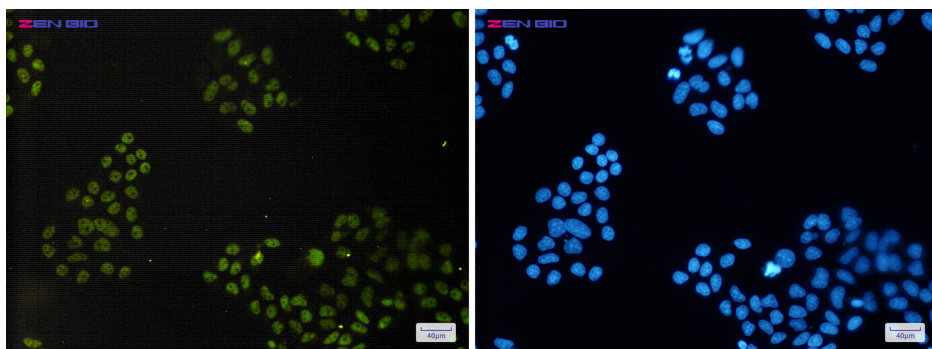
## Product images:



Western blot analysis of CGBP in C6, 3T3, HeLa lysates using CGBP antibody.



Immunohistochemistry of CGBP in paraffin-embedded Human breast cancer tissue using CGBP Rabbit mAb at dilution 1/5



Immunocytochemistry of CGBP(green) in HeLa cells using CGBP Rabbit mAb at dilution 1/50, and DAPI(blue)