

Product datasheet for **TA384067S**

SDF1 (CXCL12) Rabbit Polyclonal Antibody

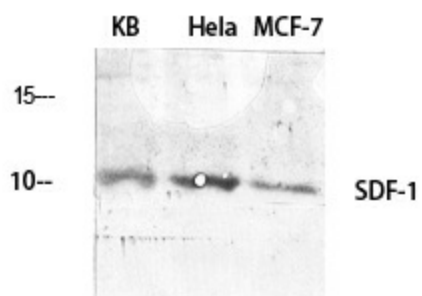
Product data:

Product Type:	Primary Antibodies
Applications:	ELISA, IF, IHC, WB
Recommended Dilution:	IF: 1/50-200 WB: 1/500-1/2000 IHC: 1/100-1/300 ELISA: 1/40000
Reactivity:	Human, Mouse, Rat
Host:	Rabbit
Isotype:	IgG
Clonality:	Polyclonal
Immunogen:	The antiserum was produced against synthesized peptide derived from human SDF-1. AA range:44-93
Formulation:	Liquid in PBS containing 50% glycerol, 0.5% BSA and 0.02% sodium azide, pH 7.3.
Concentration:	lot specific
Purification:	Affinity Purified
Conjugation:	Unconjugated
Storage:	Store at 4°C short term. Aliquot and store at -20°C long term. Avoid freeze/thaw cycles.
Stability:	1 year
Predicted Protein Size:	Observed MW (kDa):10
Gene Name:	C-X-C motif chemokine ligand 12
Database Link:	Entrez Gene 6387 Human P48061
Background:	Swiss-Prot Acc.P48061.
Synonyms:	HIRH; hSDF-1; PBSE; SCYB12; SDF-1; SDF-1a; SDF-1b; SDF1; SDF1A; SDF1B; TLSF-a; TLSF-b; TPAR1



[View online »](#)

Product images:



Western blot analysis of SDF1 in various lysates using SDF1 antibody.