

## Product datasheet for **TA384065S**

### Cullin 5 (CUL5) Rabbit Monoclonal Antibody [Clone ID: R02-5K8]

#### Product data:

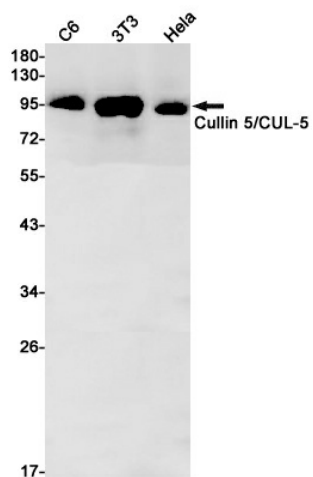
Product Type:	Primary Antibodies
Clone Name:	R02-5K8
Applications:	WB
Recommended Dilution:	WB: 1/1000-1/5000
Reactivity:	Human, Mouse, Rat
Host:	Rabbit
Isotype:	IgG
Clonality:	Monoclonal
Immunogen:	Recombinant protein of human Cullin 5
Formulation:	50mM Tris-Glycine(pH 7.4), 0.15M NaCl, 40% Glycerol, 0.01% Sodium azide and 0.05% BSA
Concentration:	lot specific
Purification:	Affinity Purified
Conjugation:	Unconjugated
Storage:	Store at 4°C short term. Aliquot and store at -20°C long term. Avoid freeze/thaw cycles.
Stability:	1 year
Predicted Protein Size:	Calculated MW: 91 kDa; Observed MW: 91 kDa
Gene Name:	cullin 5
Database Link:	<a href="#">Entrez Gene 8065 Human Q93034</a>
Background:	Swiss-Prot Acc.Q93034.Core component of multiple SCF-like ECS (Elongin-Cullin 2/5-SOCS-box protein) E3 ubiquitin-protein ligase complexes, which mediate the ubiquitination and subsequent proteasomal degradation of target proteins. As a scaffold protein may contribute to catalysis through positioning of the substrate and the ubiquitin-conjugating enzyme. The functional specificity of the E3 ubiquitin-protein ligase complex depends on the variable substrate recognition component. ECS(SOCS1) seems to direct ubiquitination of JAK2. Seems to be involved in proteasomal degradation of p53/TP53 stimulated by adenovirus E1B-55 kDa protein. May form a cell surface vasopressin receptor.



[View online »](#)

Synonyms: CUL-5; VACM-1; VACM1

**Product images:**



Western blot analysis of Cullin 5/CUL5 in C6, 3T3, HeLa lysates using Cullin 5 antibody.