

Product datasheet for **TA384063**

Cullin 3 (CUL3) Rabbit Polyclonal Antibody

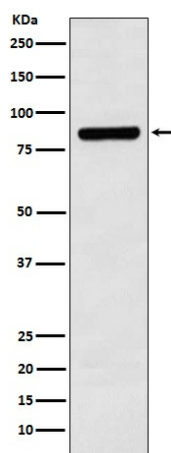
Product data:

Product Type:	Primary Antibodies
Applications:	FC, IP, WB
Recommended Dilution:	WB: 1/1000-1/5000 IP: 1/50 FC: 1/60
Reactivity:	Human, Mouse, Rat
Host:	Rabbit
Isotype:	IgG
Clonality:	Polyclonal
Immunogen:	A synthesized peptide derived from human Cullin 3
Formulation:	Rabbit IgG in phosphate buffered saline , pH 7.4, 150mM NaCl, 0.02% sodium azide and 50% glycerol.
Concentration:	lot specific
Purification:	Affinity Chromatography
Conjugation:	Unconjugated
Storage:	Store at 4°C short term. Aliquot and store at -20°C long term. Avoid freeze/thaw cycles.
Stability:	1 year
Predicted Protein Size:	89kDa
Gene Name:	cullin 3
Database Link:	Entrez Gene 8452 Human Q13618
Background:	Swiss-Prot Acc.Q13618.Core component of multiple cullin-RING-based BCR (BTB-CUL3-RBX1) E3 ubiquitin-protein ligase complexes which mediate the ubiquitination and subsequent proteasomal degradation of target proteins. As a scaffold protein may contribute to catalysis through positioning of the substrate and the ubiquitin-conjugating enzyme.
Synonyms:	CUL-3; KIAA0617



[View online »](#)

Product images:



Western blot analysis of Cullin 3 in SH-SY5Y lysates using Cullin 3 antibody.