

Product datasheet for **TA384062S**

Cortactin (CTTN) Rabbit Monoclonal Antibody [Clone ID: R07-2C5]

Product data:

Product Type:	Primary Antibodies
Clone Name:	R07-2C5
Applications:	IF, IHC, IP, WB
Recommended Dilution:	WB: 1/1000 IHC: 1/20-1/100 ICC/IF: 1/200 IP: 1/20
Reactivity:	Human, Mouse, Rat
Host:	Rabbit
Isotype:	IgG
Clonality:	Monoclonal
Immunogen:	A synthetic peptide of human Cortactin
Formulation:	50mM Tris-Glycine(pH 7.4), 0.15M NaCl, 40% Glycerol, 0.01% Sodium azide and 0.05% BSA
Concentration:	lot specific
Purification:	Affinity Purified
Conjugation:	Unconjugated
Storage:	Store at 4°C short term. Aliquot and store at -20°C long term. Avoid freeze/thaw cycles.
Stability:	1 year
Predicted Protein Size:	Calculated MW: 62 kDa; Observed MW: 80-85 kDa
Gene Name:	cortactin
Database Link:	Entrez Gene 2017 Human Q14247



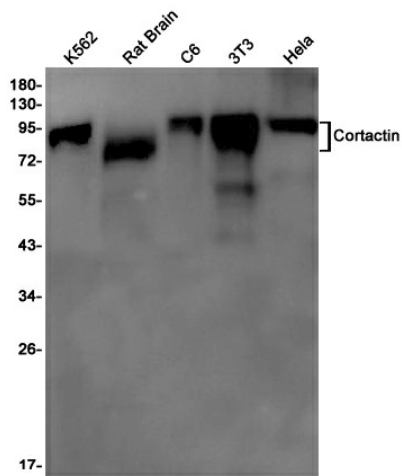
[View online »](#)

Background:

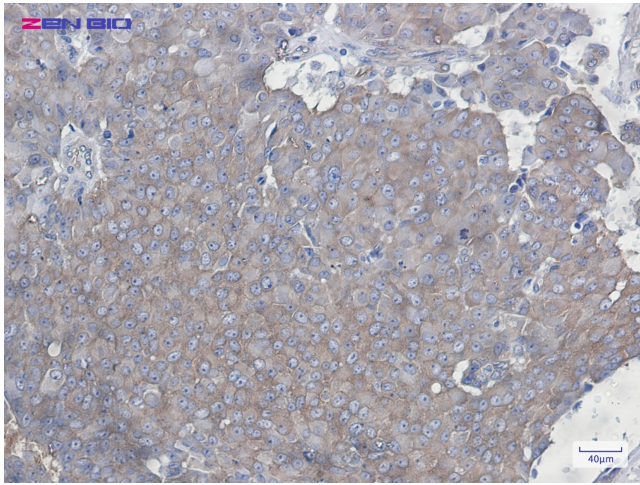
Swiss-Prot Acc.Q14247. Contributes to the organization of the actin cytoskeleton and cell shape (PubMed:21296879). Plays a role in the formation of lamellipodia and in cell migration. Plays a role in the regulation of neuron morphology, axon growth and formation of neuronal growth cones. Through its interaction with CTTNBP2, involved in the regulation of neuronal spine density. Plays a role in the invasiveness of cancer cells, and the formation of metastases (PubMed:16636290). Plays a role in focal adhesion assembly and turnover. In complex with ABL1 and MYLK regulates cortical actin-based cytoskeletal rearrangement critical to sphingosine 1-phosphate (S1P)-mediated endothelial cell (EC) barrier enhancement (PubMed:20861316). Plays a role in intracellular protein transport and endocytosis, and in modulating the levels of potassium channels present at the cell membrane (PubMed:17959782). Plays a role in receptor-mediated endocytosis via clathrin-coated pits. Required for stabilization of KCNH1 channels at the cell membrane (PubMed:23144454).

Synonyms:

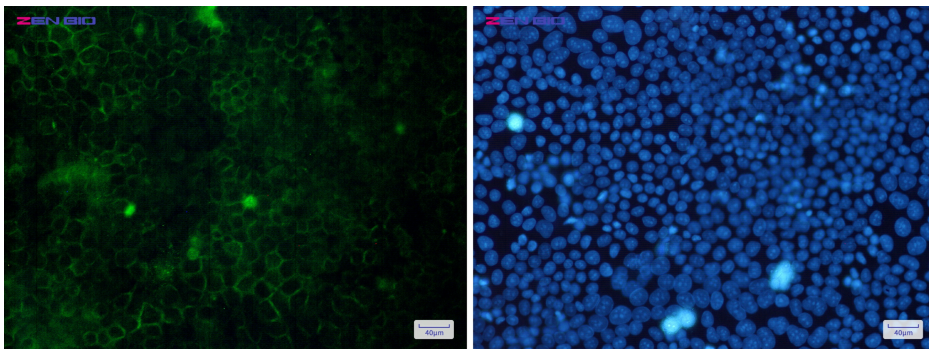
1110020L01Rik; Amplaxin; cortactin; EMS1; FLJ34459

Product images:

Western blot detection of Cortactin in K562, Rat Brain, C6, 3T3, HeLa cell lysates using Cortactin Rabbit mAb (1:1000 diluted). Predicted band size: 62 kDa. Observed band size: 80-85 kDa.



Immunohistochemistry of Cortactin in paraffin-embedded Human breast cancer tissue using Cortactin Rabbit mAb at dilution 1/20



Immunocytochemistry of Cortactin(green) in HeLa cells using Cortactin Rabbit mAb at dilution 1/5, and DAPI(blue)