

## Product datasheet for **TA384062**

### Cortactin (CTTN) Rabbit Monoclonal Antibody [Clone ID: R07-2C5]

#### Product data:

|                         |  |
|-------------------------|--|
| Product Type:           | Primary Antibodies   |
| Clone Name:             | R07-2C5  |
| Applications:           | IF, IHC, IP, WB  |
| Recommended Dilution:   | WB: 1/1000<br>IHC: 1/20-1/100<br>ICC/IF: 1/200<br>IP: 1/20                               |
| Reactivity:             | Human, Mouse, Rat  |
| Host:                   | Rabbit   |
| Isotype:                | IgG  |
| Clonality:              | Monoclonal   |
| Immunogen:              | A synthetic peptide of human Cortactin   |
| Formulation:            | 50mM Tris-Glycine(pH 7.4), 0.15M NaCl, 40% Glycerol, 0.01% Sodium azide and 0.05% BSA    |
| Concentration:          | lot specific   |
| Purification:           | Affinity Purified  |
| Conjugation:            | Unconjugated   |
| Storage:                | Store at 4°C short term. Aliquot and store at -20°C long term. Avoid freeze/thaw cycles. |
| Stability:              | 1 year   |
| Predicted Protein Size: | Calculated MW: 62 kDa; Observed MW: 80-85 kDa  |
| Gene Name:              | cortactin  |
| Database Link:          | <a href="#">Entrez Gene 2017 Human Q14247</a>  |



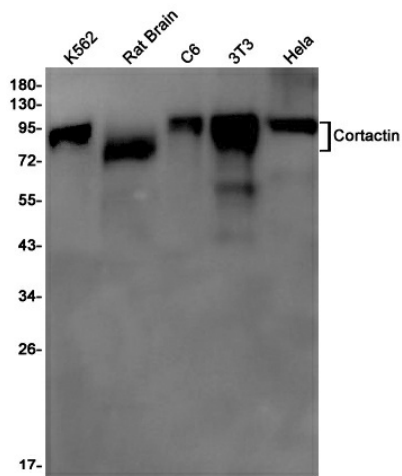
[View online »](#)

**Background:**

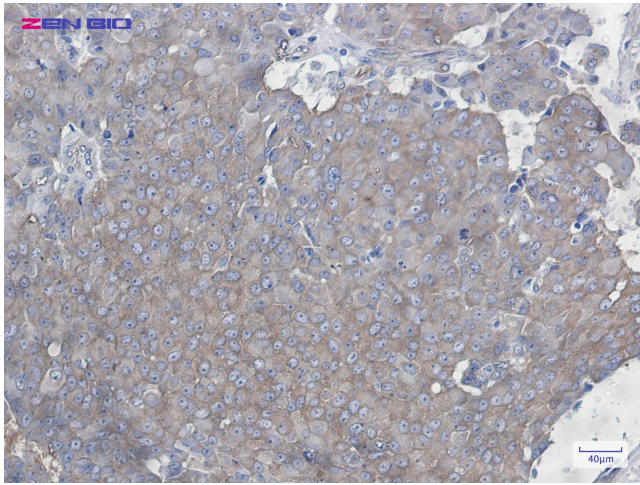
Swiss-Prot Acc.Q14247. Contributes to the organization of the actin cytoskeleton and cell shape (PubMed:21296879). Plays a role in the formation of lamellipodia and in cell migration. Plays a role in the regulation of neuron morphology, axon growth and formation of neuronal growth cones. Through its interaction with CTTNBP2, involved in the regulation of neuronal spine density. Plays a role in the invasiveness of cancer cells, and the formation of metastases (PubMed:16636290). Plays a role in focal adhesion assembly and turnover. In complex with ABL1 and MYLK regulates cortical actin-based cytoskeletal rearrangement critical to sphingosine 1-phosphate (S1P)-mediated endothelial cell (EC) barrier enhancement (PubMed:20861316). Plays a role in intracellular protein transport and endocytosis, and in modulating the levels of potassium channels present at the cell membrane (PubMed:17959782). Plays a role in receptor-mediated endocytosis via clathrin-coated pits. Required for stabilization of KCNH1 channels at the cell membrane (PubMed:23144454).

**Synonyms:**

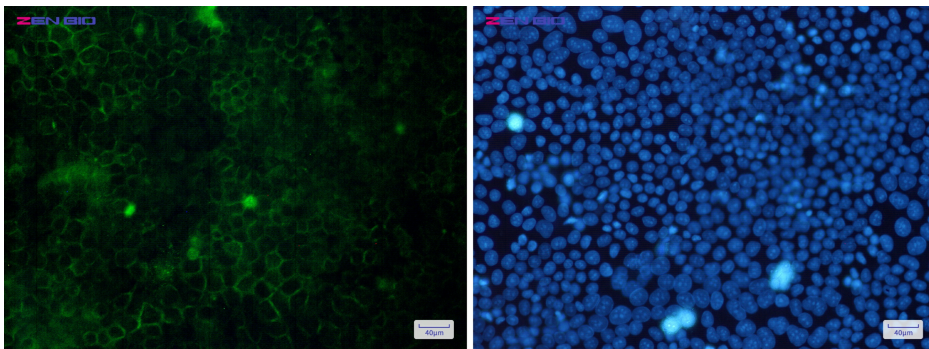
1110020L01Rik; Amplaxin; cortactin; EMS1; FLJ34459

**Product images:**

Western blot detection of Cortactin in K562, Rat Brain, C6, 3T3, HeLa cell lysates using Cortactin Rabbit mAb (1:1000 diluted). Predicted band size: 62 kDa. Observed band size: 80-85 kDa.



Immunohistochemistry of Cortactin in paraffin-embedded Human breast cancer tissue using Cortactin Rabbit mAb at dilution 1/20



Immunocytochemistry of Cortactin (green) in HeLa cells using Cortactin Rabbit mAb at dilution 1/5, and DAPI (blue)