

Product datasheet for **TA384057**

beta Catenin (CTNNB1) Rabbit Polyclonal Antibody

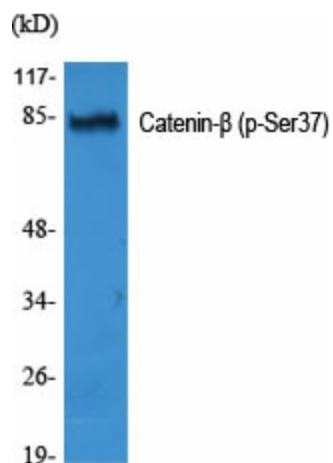
Product data:

Product Type:	Primary Antibodies
Applications:	ELISA, IF, IHC, WB
Recommended Dilution:	WB: 1/500-1/2000 IHC: 1/100-1/300 IF: 1/200-1/1000 ELISA: 1/40000
Reactivity:	Human, Mouse, Rat
Host:	Rabbit
Isotype:	IgG
Clonality:	Polyclonal
Immunogen:	The antiserum was produced against synthesized peptide derived from human Catenin-beta around the phosphorylation site of Ser37. AA range:3-52 (Phosphorylated)
Formulation:	Liquid in PBS containing 50% glycerol, 0.5% BSA and 0.02% sodium azide, pH 7.3.
Concentration:	lot specific
Purification:	Affinity Purified
Conjugation:	Unconjugated
Storage:	Store at 4°C short term. Aliquot and store at -20°C long term. Avoid freeze/thaw cycles.
Stability:	1 year
Predicted Protein Size:	Observed MW (kDa):85
Gene Name:	catenin beta 1
Database Link:	Entrez Gene 1499 Human P35222
Background:	Swiss-Prot Acc.P35222.
Synonyms:	beta-catenin; CTNNB; DKFZp686D02253; FLJ25606; FLJ37923; OTTHUMP00000209288



[View online »](#)

Product images:



Western blot analysis of Phospho-beta Catenin (Ser37) in various lysates using Phospho-beta Catenin (Ser37) antibody.