

Product datasheet for **TA384055**

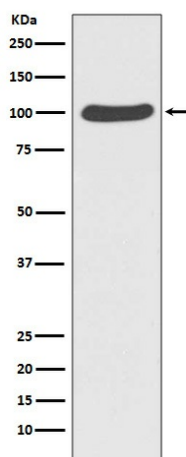
alpha 1 Catenin (CTNNA1) Rabbit Polyclonal Antibody

Product data:

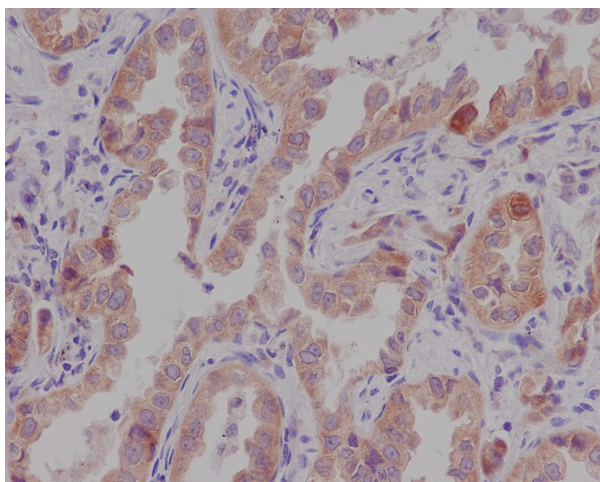
Product Type:	Primary Antibodies
Applications:	FC, IF, IHC, IP, WB
Recommended Dilution:	WB: 1/10000-1/20000 IHC: 1/50-1/200 ICC/IF: 1/50-1/200 IP: 1/50 FC: 1/50
Reactivity:	Human, Mouse, Rat
Host:	Rabbit
Isotype:	IgG
Clonality:	Polyclonal
Immunogen:	A synthesized peptide derived from human Catenin alpha 1
Formulation:	Rabbit IgG in phosphate buffered saline , pH 7.4, 150mM NaCl, 0.02% sodium azide and 50% glycerol.
Concentration:	lot specific
Purification:	Affinity Chromatography
Conjugation:	Unconjugated
Storage:	Store at 4°C short term. Aliquot and store at -20°C long term. Avoid freeze/thaw cycles.
Stability:	1 year
Predicted Protein Size:	100kDa
Gene Name:	catenin alpha 1
Database Link:	Entrez Gene 1495 Human P35221
Background:	Swiss-Prot Acc.P35221.Adherens junctions are dynamic structures that form cell-cell contacts and are important in development, differentiation, tissue integrity, morphology and cell polarity. They are composed of the transmembrane proteins, cadherins, which bind cadherins on adjacent cells in a calcium-dependent manner.
Synonyms:	alpha-catenin; alpha-E-catenin; alphaE-catenin; CAP102; FLJ36832; FLJ52416



[View online »](#)

Product images:

Western blot analysis of Catenin alpha 1 in HeLa lysates using CTNNA1 antibody.



Immunohistochemistry analysis of paraffin-embedded Human lung cancer using Catenin alpha 1 antibody. High-pressure and temperature Sodium Citrate pH 6.0 was used for antigen retrieval.