

## Product datasheet for **TA384054S**

### CCN2 Rabbit Monoclonal Antibody [Clone ID: R08-8C2]

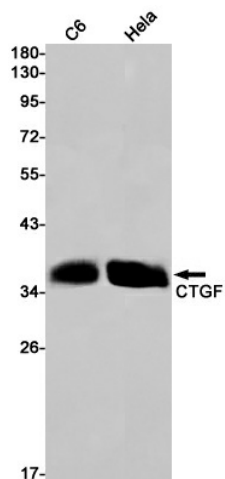
#### Product data:

Product Type:	Primary Antibodies
Clone Name:	R08-8C2
Applications:	IP, WB
Recommended Dilution:	WB: 1/1000 IP: 1/20
Reactivity:	Human, Rat
Host:	Rabbit
Isotype:	IgG
Clonality:	Monoclonal
Immunogen:	Recombinant protein of human CTGF
Formulation:	50mM Tris-Glycine(pH 7.4), 0.15M NaCl, 40% Glycerol, 0.01% Sodium azide and 0.05% BSA
Concentration:	lot specific
Purification:	Affinity Purified
Conjugation:	Unconjugated
Storage:	Store at 4°C short term. Aliquot and store at -20°C long term. Avoid freeze/thaw cycles.
Stability:	1 year
Predicted Protein Size:	Calculated MW: 38 kDa; Observed MW: 35 kDa
Gene Name:	connective tissue growth factor
Database Link:	<a href="#">Entrez Gene 1490 Human P29279</a>
Background:	Swiss-Prot Acc.P29279.Major connective tissue mitogen secreted by vascular endothelial cells. Promotes proliferation and differentiation of chondrocytes. Mediates heparin- and divalent cation-dependent cell adhesion in many cell types including fibroblasts, myofibroblasts, endothelial and epithelial cells. Enhances fibroblast growth factor-induced DNA synthesis.
Synonyms:	CCN2; HCS24; IGFBP8; MGC102839; NOV2



[View online »](#)

## Product images:



Western blot detection of CTGF in C6,HeLa cell lysates using CTGF Rabbit mAb(1:1000 diluted).Predicted band size:38kDa.Observed band size:35kDa.