

## Product datasheet for **TA384051**

### Placental lactogen (CSH1) Rabbit Polyclonal Antibody

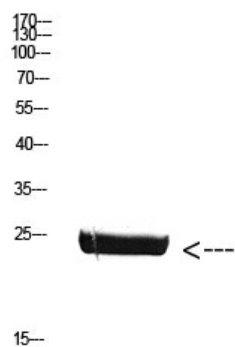
#### Product data:

Product Type:	Primary Antibodies
Applications:	ELISA, IHC, WB
Recommended Dilution:	IHC-p: 1/100-1/300 WB: 1/500-1/2000
Reactivity:	Human
Host:	Rabbit
Isotype:	IgG
Clonality:	Polyclonal
Immunogen:	Synthetic peptide from human protein at AA range: 161-210
Formulation:	Liquid in PBS containing 50% glycerol, 0.5% BSA and 0.02% sodium azide, pH 7.3.
Concentration:	lot specific
Purification:	Affinity Purified
Conjugation:	Unconjugated
Storage:	Store at 4°C short term. Aliquot and store at -20°C long term. Avoid freeze/thaw cycles.
Stability:	1 year
Predicted Protein Size:	Observed MW (kDa):25
Gene Name:	chorionic somatomammotropin hormone 1
Database Link:	<a href="#">Entrez Gene 1442 Human P01243</a>
Background:	Swiss-Prot Acc.P01243.
Synonyms:	choriomammotropin; CS-1; CSA; CSMT; FLJ75407; hCS-A; Lactogen; PL



[View online »](#)

## Product images:



Western blot analysis of Placental Lactogen in mouse brain lysates using Placental Lactogen antibody.