

## Product datasheet for **TA384048**

### Citrate synthetase (CS) Rabbit Monoclonal Antibody [Clone ID: R07-2I2]

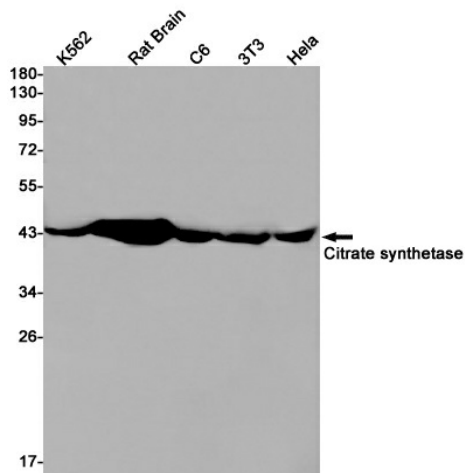
#### Product data:

Product Type:	Primary Antibodies
Clone Name:	R07-2I2
Applications:	IF, IHC, WB
Recommended Dilution:	WB: 1/1000 IHC: 1/50 ICC/IF: 1/20-1/100
Reactivity:	Human, Mouse, Rat
Host:	Rabbit
Isotype:	IgG
Clonality:	Monoclonal
Immunogen:	A synthetic peptide of human Citrate synthetase
Formulation:	50mM Tris-Glycine(pH 7.4), 0.15M NaCl, 40% Glycerol, 0.01% Sodium azide and 0.05% BSA
Concentration:	lot specific
Purification:	Affinity Purified
Conjugation:	Unconjugated
Storage:	Store at 4°C short term. Aliquot and store at -20°C long term. Avoid freeze/thaw cycles.
Stability:	1 year
Predicted Protein Size:	Calculated MW: 52 kDa; Observed MW: 45 kDa
Gene Name:	citrate synthase
Database Link:	<a href="#">Entrez Gene 1431 Human O75390</a>
Background:	Swiss-Prot Acc.O75390.MiscellaneousCitrate synthase is found in nearly all cells capable of oxidative metabolism.
Synonyms:	CS

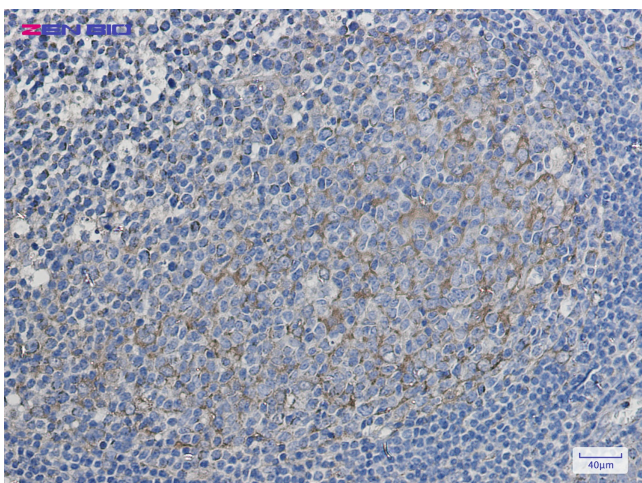


[View online »](#)

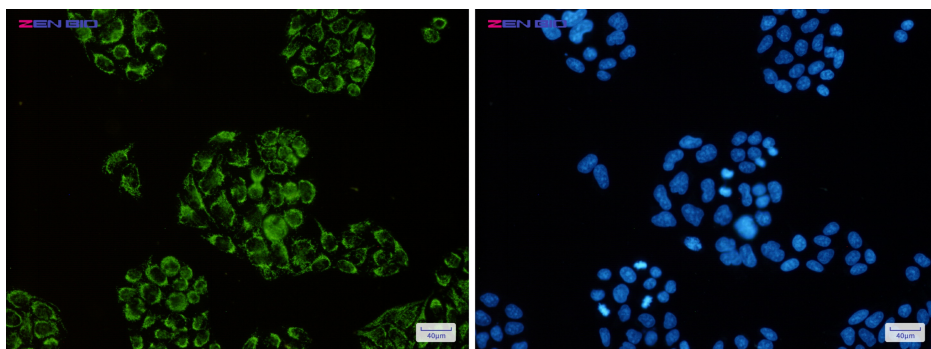
Product images:



Western blot detection of Citrate synthetase in K562,Rat Brain,C6,3T3,HeLa cell lysates using Citrate synthetase Rabbit mAb(1:1000 diluted).Predicted band size:52kDa.Observed band size:45kDa.



Immunohistochemistry of Citrate synthetase in paraffin-embedded Human tonsil using Citrate synthetase Rabbit mAb at dilution 1/5



Immunocytochemistry of Citrate synthetase(green) in HeLa cells using Citrate synthetase Rabbit mAb at dilution 1/50, and DAPI(blue)