

## Product datasheet for **TA384047**

### Citrate synthetase (CS) Rabbit Polyclonal Antibody

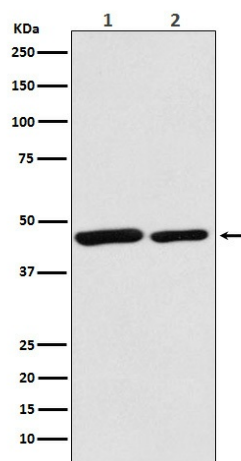
#### Product data:

Product Type:	Primary Antibodies
Applications:	FC, IF, IHC, WB
Recommended Dilution:	WB: 1/500-1/2000 IHC: 1/50-1/200 ICC/IF: 1/50-1/200 FC: 1/50
Reactivity:	Human, Mouse, Rat
Host:	Rabbit
Isotype:	IgG
Clonality:	Polyclonal
Immunogen:	A synthesized peptide derived from human Citrate synthetase
Formulation:	Rabbit IgG in phosphate buffered saline , pH 7.4, 150mM NaCl, 0.02% sodium azide and 50% glycerol.
Concentration:	lot specific
Purification:	Affinity Chromatography
Conjugation:	Unconjugated
Storage:	Store at 4°C short term. Aliquot and store at -20°C long term. Avoid freeze/thaw cycles.
Stability:	1 year
Predicted Protein Size:	45kDa
Gene Name:	citrate synthase
Database Link:	<a href="#">Entrez Gene 1431 Human O75390</a>
Background:	Swiss-Prot Acc.O75390.Carbohydrate metabolism; tricarboxylic acid cycle; isocitrate from oxaloacetate: step 1/2.
Synonyms:	CS



[View online »](#)

## Product images:



Western blot analysis of Citrate synthetase in (1) HeLa lysates; (1) mouse spleen lysates using Citrate Synthetase antibody.