

## Product datasheet for **TA384046**

### Alpha B Crystallin (CRYAB) Rabbit Polyclonal Antibody

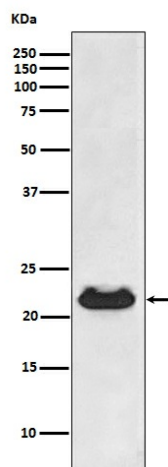
#### Product data:

Product Type:	Primary Antibodies
Applications:	IF, IHC, IP, WB
Recommended Dilution:	WB: 1/500-1/2000 IHC: 1/50-1/200 ICC/IF: 1/50-1/200 IP: 1/80
Reactivity:	Human, Rat
Host:	Rabbit
Isotype:	IgG
Clonality:	Polyclonal
Immunogen:	A synthesized peptide derived from human CRYAB
Formulation:	Rabbit IgG in phosphate buffered saline , pH 7.4, 150mM NaCl, 0.02% sodium azide and 50% glycerol.
Concentration:	lot specific
Purification:	Affinity Chromatography
Conjugation:	Unconjugated
Storage:	Store at 4°C short term. Aliquot and store at -20°C long term. Avoid freeze/thaw cycles.
Stability:	1 year
Predicted Protein Size:	22kDa
Gene Name:	crystallin alpha B
Database Link:	<a href="#">Entrez Gene 1410 Human P02511</a>
Background:	Swiss-Prot Acc.P02511.May contribute to the transparency and refractive index of the lens.
Synonyms:	Alpha(B)-crystallin; CRYA2; CTPP2; HspB5



[View online »](#)

## Product images:



Western blot analysis of CRYAB in Human fetal heart lysates using alpha B Crystallin antibody.