

Product datasheet for **TA384044S**

CREB1 Rabbit Monoclonal Antibody [Clone ID: R07-3C4]

Product data:

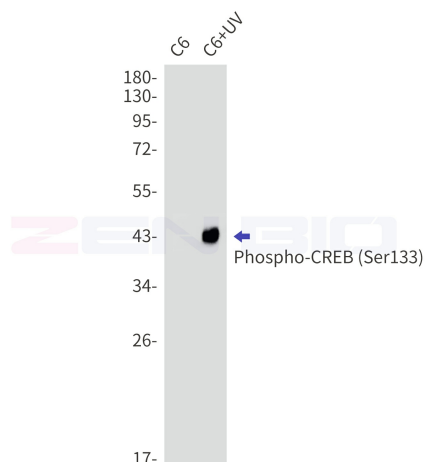
Product Type:	Primary Antibodies
Clone Name:	R07-3C4
Applications:	IHC, IP, WB
Recommended Dilution:	WB: 1/1000 IHC: 1/50 IP: 1/20
Reactivity:	Human, Rat
Host:	Rabbit
Isotype:	IgG
Clonality:	Monoclonal
Immunogen:	A synthetic phosphopeptide corresponding to residues surrounding Ser133 of human CREB (Phosphorylated)
Formulation:	50mM Tris-Glycine(pH 7.4), 0.15M NaCl, 40% Glycerol, 0.01% Sodium azide and 0.05% BSA
Concentration:	lot specific
Purification:	Affinity Purified
Conjugation:	Unconjugated
Storage:	Store at 4°C short term. Aliquot and store at -20°C long term. Avoid freeze/thaw cycles.
Stability:	1 year
Predicted Protein Size:	Calculated MW: 37 kDa; Observed MW: 43 kDa
Gene Name:	cAMP responsive element binding protein 1
Database Link:	Entrez Gene 1385 Human P16220
Background:	Swiss-Prot Acc.P16220.Phosphorylation-dependent transcription factor that stimulates transcription upon binding to the DNA cAMP response element (CRE), a sequence present in many viral and cellular promoters. Transcription activation is enhanced by the TORC coactivators which act independently of Ser-133 phosphorylation. Involved in different cellular processes including the synchronization of circadian rhythmicity and the differentiation of adipose cells.SitesFeature keyPosition(s)Description



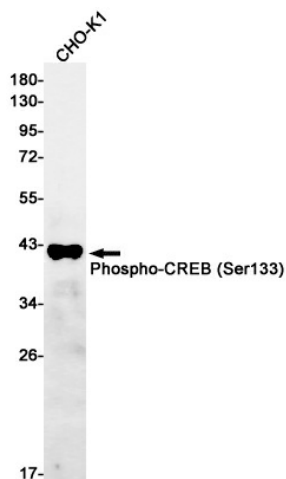
[View online »](#)

Synonyms: CREB; CREB-1; MGC9284; OTTHUMP00000206660

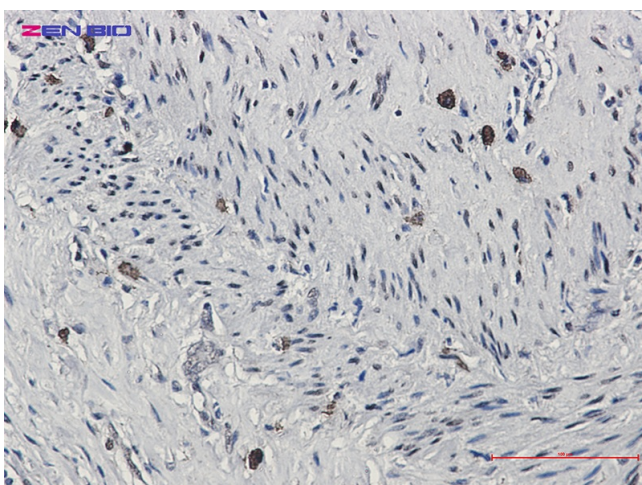
Product images:



Western blot detection of Phospho-CREB (Ser133) in C6, C6+UV lysates using Phospho-CREB (Ser133) antibody. Predicted band size: 37kDa. Observed band size: 43kDa.



Western blot analysis of Phospho-CREB (Ser133) in CHO-K1 lysates using Phospho-CREB (Ser133) antibody.



Immunohistochemistry of CREB (Phospho-Ser133) in paraffin-embedded Human lung cancer tissue using CREB (Phospho-Ser133) Rabbit mAb at dilution 1/50