

## Product datasheet for **TA384041**

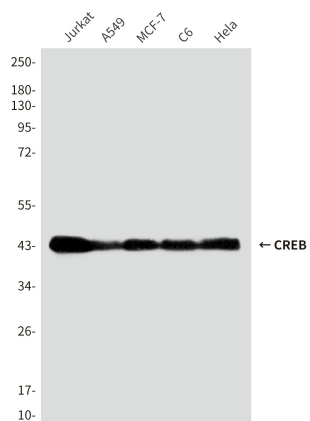
### CREB1 Mouse Monoclonal Antibody [Clone ID: 1E9-G10-C3-H6]

#### Product data:

Product Type:	Primary Antibodies
Clone Name:	1E9-G10-C3-H6
Applications:	WB
Recommended Dilution:	WB: 1/1000
Reactivity:	Human, Rat
Host:	Mouse
Isotype:	IgG1
Clonality:	Monoclonal
Immunogen:	Purified recombinant human CREB protein fragments expressed in E.coli.
Formulation:	Liquid in PBS containing 50% glycerol, 0.5% BSA and 0.03% Proclin 300, pH 7.3.
Concentration:	lot specific
Purification:	Affinity Purified
Conjugation:	Unconjugated
Storage:	Store at 4°C short term. Aliquot and store at -20°C long term. Avoid freeze/thaw cycles.
Stability:	1 year
Predicted Protein Size:	43kDa
Gene Name:	cAMP responsive element binding protein 1
Database Link:	<a href="#">Entrez Gene 1385 Human P16220</a>
Background:	Swiss-Prot Acc.P16220.This protein binds the cAMP response element (CRE), a sequence present in many viral and cellular promoters. CREB stimulates transcription on binding to the CRE. Transcription activation is enhanced by the TORC coactivators which act independently of Ser-133 phosphorylation. Implicated in synchronization of circadian rhythmicity.
Synonyms:	CREB; CREB-1; MGC9284; OTTHUMP00000206660



[View online »](#)

**Product images:**

Western blot analysis of CREB in Jurkat, A549, MCF-7, C6 and HeLa lysates using CREB antibody.