

## Product datasheet for **TA384036**

### Collagen IV (COL4A1) Rabbit Polyclonal Antibody

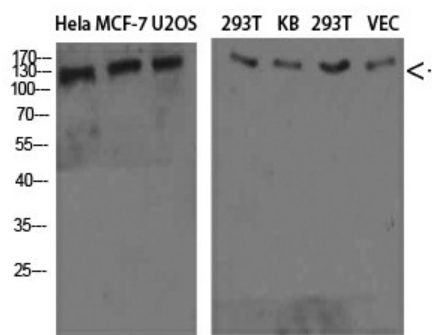
#### Product data:

Product Type:	Primary Antibodies
Applications:	ELISA, WB
Recommended Dilution:	WB: 1/500-2000
Reactivity:	Human, Mouse, Rat
Host:	Rabbit
Isotype:	IgG
Clonality:	Polyclonal
Immunogen:	Synthesized peptide derived from Collagen IV . at AA range: 1428-1443
Formulation:	Liquid in PBS containing 50% glycerol, 0.5% BSA and 0.02% sodium azide, pH 7.3.
Concentration:	lot specific
Purification:	Affinity Purified
Conjugation:	Unconjugated
Storage:	Store at 4°C short term. Aliquot and store at -20°C long term. Avoid freeze/thaw cycles.
Stability:	1 year
Predicted Protein Size:	Observed MW (kDa):130
Gene Name:	collagen type IV alpha 1 chain
Database Link:	<a href="#">Entrez Gene 1282 Human P02462</a>
Background:	Swiss-Prot Acc.P02462.
Synonyms:	arresten



[View online »](#)

## Product images:



Western blot analysis of Collagen IV alpha 1 in HeLa MCF-7 U2OS 293T KB 293T VEC lysates using Collagen IV alpha 1 antibody.