

## Product datasheet for **TA384034**

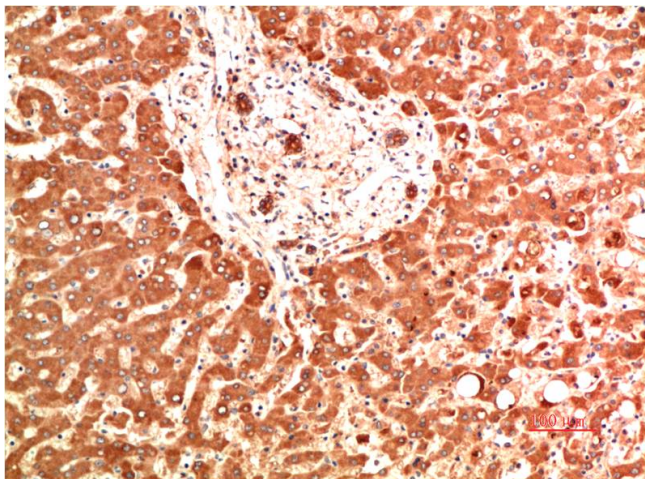
### Collagen IV (COL4A1) Mouse Monoclonal Antibody [Clone ID: 2G3-1H1-6E5]

#### Product data:

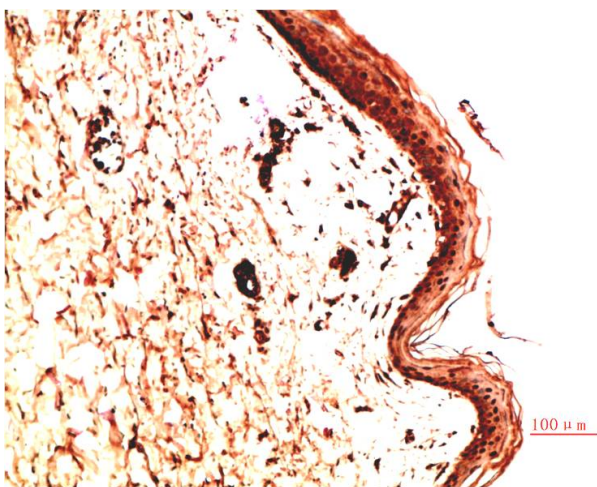
Product Type:	Primary Antibodies
Clone Name:	2G3-1H1-6E5
Applications:	IHC
Recommended Dilution:	IHC: 1/100-200
Reactivity:	Human, Rat, Mouse
Host:	Mouse
Isotype:	IgG1
Clonality:	Monoclonal
Immunogen:	Synthetic peptide conjugated to KLH.
Formulation:	Liquid in PBS containing 50% glycerol, 0.5% BSA and 0.03% Proclin 300, pH 7.3.
Concentration:	lot specific
Purification:	Affinity Purified
Conjugation:	Unconjugated
Storage:	Store at 4°C short term. Aliquot and store at -20°C long term. Avoid freeze/thaw cycles.
Stability:	1 year
Predicted Protein Size:	161kDa
Gene Name:	collagen type IV alpha 1 chain
Database Link:	<a href="#">Entrez Gene 1282 Human P02462</a>
Background:	Swiss-Prot Acc.p02462.Type IV collagen is the major structural component of glomerular basement membranes (GBM), forming a 'chicken-wire' meshwork together with laminins, proteoglycans and entactin/nidogen.
Synonyms:	arresten



[View online »](#)

**Product images:**

Immunohistochemistry analysis of paraffin-embedded Human Liver Carcinoma Tissue using Collagen IV alpha 1 (2G3) antibody. High-pressure and temperature Sodium Citrate pH 6.0 was used for antigen retrieval.



Immunohistochemical analysis of paraffin-embedded Human tonsils using Collagen IV alpha 1 (2G3) antibody. High-pressure and temperature Sodium Citrate pH 6.0 was used for antigen retrieval.