

## Product datasheet for **TA384033S**

### Collagen III (COL3A1) Rabbit Monoclonal Antibody [Clone ID: R06-4E1]

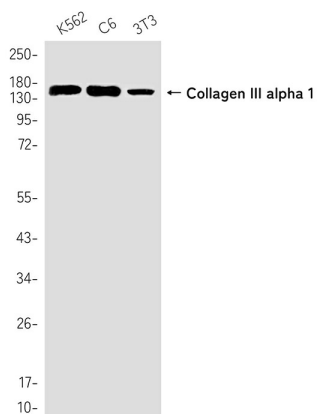
#### Product data:

Product Type:	Primary Antibodies
Clone Name:	R06-4E1
Applications:	IF, IP, WB
Recommended Dilution:	WB: 1/1000 ICC/IF: 1/20 IP: 1/20
Reactivity:	Human
Host:	Rabbit
Isotype:	IgG
Clonality:	Monoclonal
Immunogen:	Recombinant protein of human Collagen III
Formulation:	50mM Tris-Glycine(pH 7.4), 0.15M NaCl, 40% Glycerol, 0.01% Sodium azide and 0.05% BSA
Concentration:	lot specific
Purification:	Affinity Purified
Conjugation:	Unconjugated
Storage:	Store at 4°C short term. Aliquot and store at -20°C long term. Avoid freeze/thaw cycles.
Stability:	1 year
Predicted Protein Size:	Calculated MW: 139 kDa; Observed MW: 150 kDa
Gene Name:	collagen type III alpha 1 chain
Database Link:	<a href="#">Entrez Gene 1281 Human P02461</a>
Background:	Swiss-Prot Acc.P02461.Collagen type III occurs in most soft connective tissues along with type I collagen. Involved in regulation of cortical development. Is the major ligand of ADGRG1 in the developing brain and binding to ADGRG1 inhibits neuronal migration and activates the RhoA pathway by coupling ADGRG1 to GNA13 and possibly GNA12.SitesFeature keyPosition(s)Description
Synonyms:	EDS4A; FLJ34534

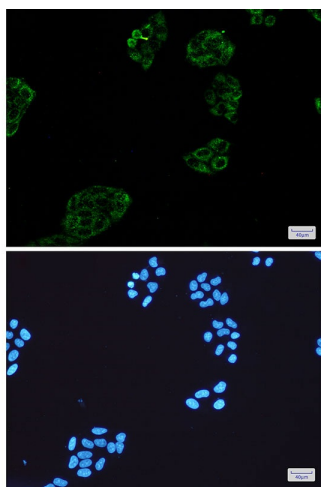


[View online »](#)

## Product images:



Western blot analysis of Collagen III in K562, C6, 3T3 lysates using Collagen III alpha 1 antibody.



Immunocytochemistry analysis of Collagen III (green) in HeLa using Collagen III antibody, and DAPI (blue)