

Product datasheet for **TA384032**

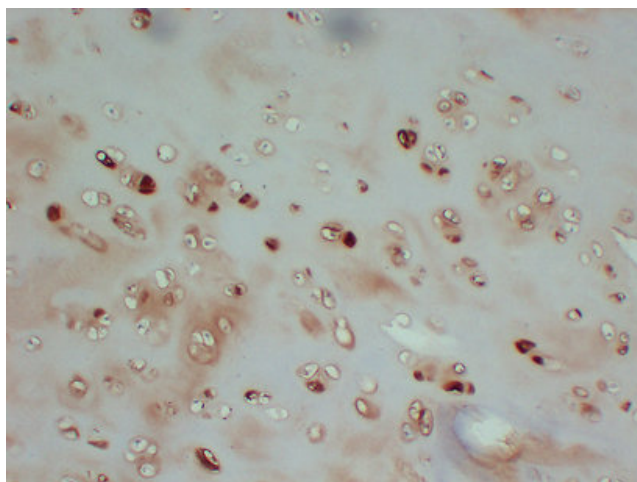
Collagen II (COL2A1) Mouse Monoclonal Antibody [Clone ID: 1A2-10G10-6D6]

Product data:

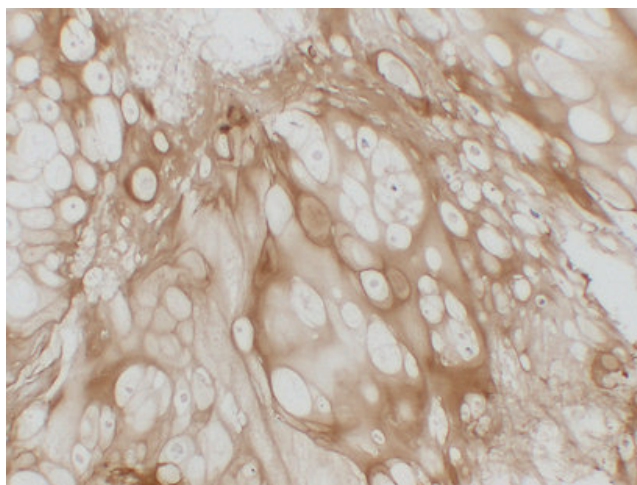
Product Type:	Primary Antibodies
Clone Name:	1A2-10G10-6D6
Applications:	IHC
Recommended Dilution:	IHC-p: 1/100-1/500
Reactivity:	Human
Host:	Mouse
Isotype:	IgG1, kappa
Clonality:	Monoclonal
Immunogen:	Synthesized peptide derived from human Collagen Type II
Formulation:	Liquid in PBS containing 50% glycerol, 0.5% BSA and 0.02% sodium azide, pH 7.3.
Concentration:	lot specific
Purification:	Affinity Chromatography
Conjugation:	Unconjugated
Storage:	Store at 4°C short term. Aliquot and store at -20°C long term. Avoid freeze/thaw cycles.
Stability:	1 year
Gene Name:	collagen type II alpha 1 chain
Database Link:	Entrez Gene 1280 Human P02458
Background:	Swiss-Prot Acc.P02458.
Synonyms:	ANFH; AOM; chondrocalcin; COL11A3; MGC131516; SEDC



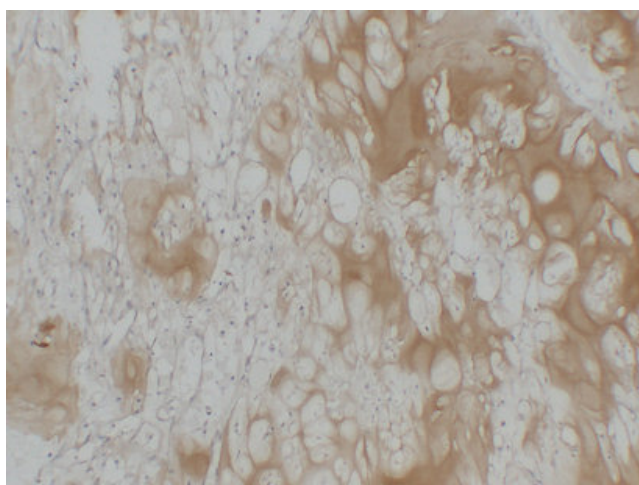
[View online »](#)

Product images:

Immunohistochemical analysis of paraffin-embedded Cartilage. 1, Antibody was diluted at 1:200(4°,overnight). 2, Citrate buffer of pH6.0 was used for antigen retrieval. 3,Secondary antibody was diluted at 1:200(room temperature, 30min).



Immunohistochemical analysis of paraffin-embedded chondrosarcoma. 1, Antibody was diluted at 1:200(4°,overnight). 2, Citrate buffer of pH6.0 was used for antigen retrieval. 3,Secondary antibody was diluted at 1:200(room temperature, 30min).



Immunohistochemical analysis of paraffin-embedded Chondrosarcoma. 1, Antibody was diluted at 1:200(4°,overnight). 2, Citrate buffer of pH6. was used for antigen retrieval. 3,Secondary antibody was diluted at 1:200(room temperature, 30min).