

## Product datasheet for **TA384031**

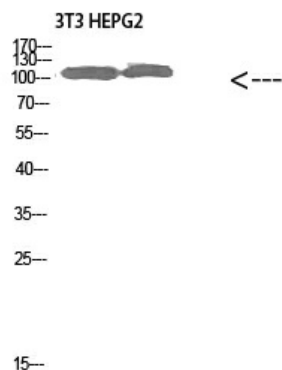
### COL28A1 Rabbit Polyclonal Antibody

#### Product data:

Product Type:	Primary Antibodies
Applications:	ELISA, WB
Recommended Dilution:	WB: 1/500-2000
Reactivity:	Human, Mouse
Host:	Rabbit
Isotype:	IgG
Clonality:	Polyclonal
Immunogen:	The antiserum was produced against synthesized peptide derived from the N-terminal region of human COL28A1. AA range:111-160
Formulation:	Liquid in PBS containing 50% glycerol, 0.5% BSA and 0.02% sodium azide, pH 7.3.
Concentration:	lot specific
Purification:	Affinity Purified
Conjugation:	Unconjugated
Storage:	Store at 4°C short term. Aliquot and store at -20°C long term. Avoid freeze/thaw cycles.
Stability:	1 year
Predicted Protein Size:	Observed MW (kDa):116
Database Link:	<a href="#">Q2UY09</a>



[View online »](#)

**Product images:**

Western blot analysis of Collagen XXVIII alpha 1 in 3T3 HEPG2 lysates using Collagen XXVIII alpha 1 antibody.