

## Product datasheet for **TA384030**

### Collagen I (COL1A2) Rabbit Polyclonal Antibody

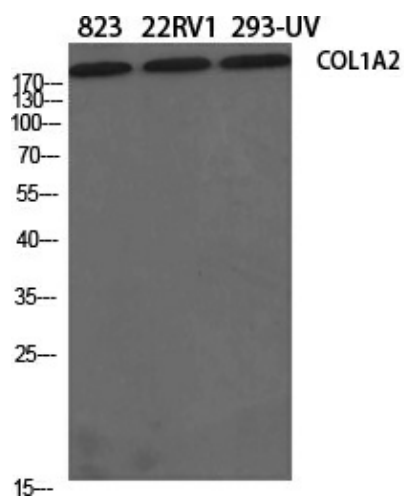
#### Product data:

Product Type:	Primary Antibodies
Applications:	ELISA, IF, IHC, WB
Recommended Dilution:	IHC: 1/100-1/300 IF: 1/200-1/1000 ELISA: 1/10000
Reactivity:	Human, Mouse, Rat
Host:	Rabbit
Isotype:	IgG
Clonality:	Polyclonal
Immunogen:	The antiserum was produced against synthesized peptide derived from human Collagen I. AA range:1-50
Formulation:	Liquid in PBS containing 50% glycerol, 0.5% BSA and 0.02% sodium azide, pH 7.3.
Concentration:	lot specific
Purification:	Affinity Purified
Conjugation:	Unconjugated
Storage:	Store at 4°C short term. Aliquot and store at -20°C long term. Avoid freeze/thaw cycles.
Stability:	1 year
Predicted Protein Size:	Observed MW (kDa):200
Gene Name:	collagen type I alpha 2 chain
Database Link:	<a href="#">Entrez Gene 1278 Human P08123</a>
Background:	Swiss-Prot Acc.P08123.
Synonyms:	OI4



[View online »](#)

## Product images:



Western blot analysis of Collagen I alpha 2 in 823, 22RV1, 293UV lysates using Collagen I alpha 2 antibody.