

Product datasheet for **TA384029S**

Collagen I (COL1A1) Rabbit Monoclonal Antibody [Clone ID: R02-5E5]

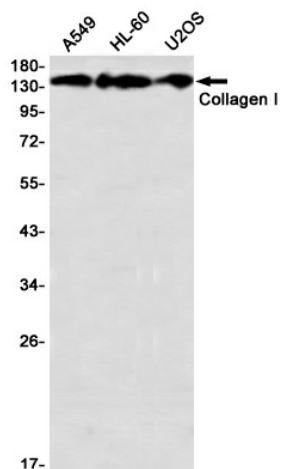
Product data:

Product Type:	Primary Antibodies
Clone Name:	R02-5E5
Applications:	IF, IP, WB
Recommended Dilution:	WB: 1/1000 ICC/IF: 1/50 IP: 1/20
Reactivity:	Human
Host:	Rabbit
Isotype:	IgG
Clonality:	Monoclonal
Immunogen:	Recombinant protein of human Collagen I
Formulation:	50mM Tris-Glycine(pH 7.4), 0.15M NaCl, 40% Glycerol, 0.01% Sodium azide and 0.05% BSA
Concentration:	lot specific
Purification:	Affinity Purified
Conjugation:	Unconjugated
Storage:	Store at 4°C short term. Aliquot and store at -20°C long term. Avoid freeze/thaw cycles.
Stability:	1 year
Predicted Protein Size:	Calculated MW:139 kDa,Observed MW:139 kDa
Gene Name:	collagen type I alpha 1
Database Link:	Entrez Gene 1277 Human P02452
Synonyms:	OI4

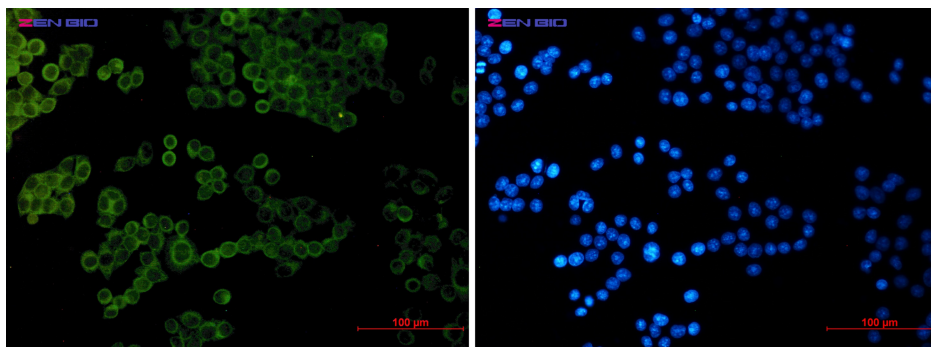


[View online »](#)

Product images:



Western blot detection of Collagen I in A549, HL-60, U2OS using Collagen I Rabbit mAb(1:1000 diluted)



Immunocytochemistry of Collagen I alpha 1 (green) in HeLa using Collagen I alpha 1 antibody at dilution 1/50, and DAPI(blue)