

## Product datasheet for **TA384028**

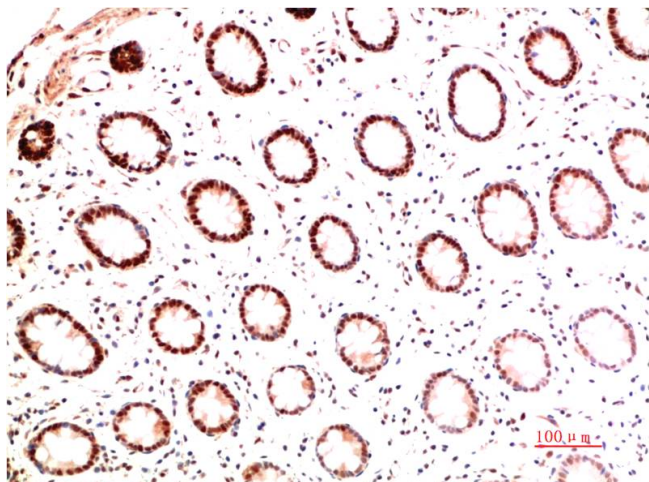
### COL1A1 Mouse Monoclonal Antibody [Clone ID: 4C4-5E4-1E10]

#### Product data:

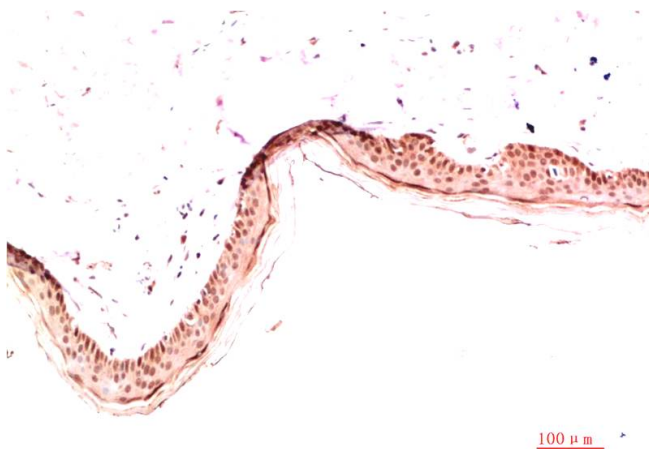
Product Type:	Primary Antibodies
Clone Name:	4C4-5E4-1E10
Applications:	IHC
Recommended Dilution:	IHC: 1/100-200
Reactivity:	Human, Rat, Mouse
Host:	Mouse
Isotype:	IgG1
Clonality:	Monoclonal
Immunogen:	Synthetic peptide conjugated to KLH.
Formulation:	Liquid in PBS containing 50% glycerol, 0.5% BSA and 0.03% Proclin 300, pH 7.3.
Concentration:	lot specific
Purification:	Affinity Purified
Conjugation:	Unconjugated
Storage:	Store at 4°C short term. Aliquot and store at -20°C long term. Avoid freeze/thaw cycles.
Stability:	1 year
Predicted Protein Size:	139kDa
Database Link:	<a href="#">P02452</a>
Background:	Swiss-Prot Acc.P02452.Type I collagen is a member of group I collagen (fibrillar forming collagen).SitesFeature keyPosition(s)Description



[View online »](#)

**Product images:**

Immunohistochemistry analysis of paraffin-embedded Human Colon Carcinoma Tissue using Collagen I alpha 1 (4C4) antibody. High-pressure and temperature Sodium Citrate pH 6.0 was used for antigen retrieval.



Immunohistochemical analysis of paraffin-embedded Human tonsils using Collagen I alpha 1 (4C4) antibody. High-pressure and temperature Sodium Citrate pH 6.0 was used for antigen retrieval.