

## Product datasheet for **TA384025**

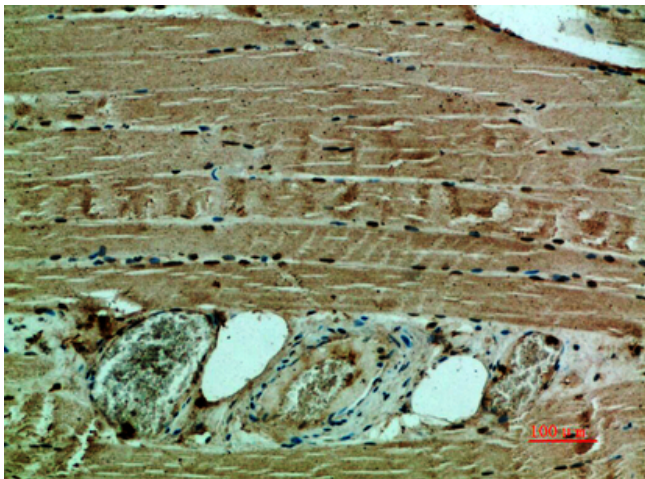
### COL12A1 Rabbit Polyclonal Antibody

#### Product data:

|                       |  |
|-----------------------|--|
| Product Type:         | Primary Antibodies   |
| Applications:         | ELISA, IHC   |
| Recommended Dilution: | IHC-p: 1/50-1/200  |
| Reactivity:           | Human  |
| Host:                 | Rabbit   |
| Isotype:              | IgG  |
| Clonality:            | Polyclonal   |
| Immunogen:            | Synthetic peptide from human protein at AA range: 1993-2064                              |
| Formulation:          | Liquid in PBS containing 50% glycerol, 0.5% BSA and 0.02% sodium azide, pH 7.3.          |
| Concentration:        | lot specific   |
| Purification:         | Affinity Purified  |
| Conjugation:          | Unconjugated   |
| Storage:              | Store at 4°C short term. Aliquot and store at -20°C long term. Avoid freeze/thaw cycles. |
| Stability:            | 1 year   |
| Database Link:        | <a href="#">Q99715</a>   |



[View online »](#)

**Product images:**

Immunohistochemistry analysis of paraffin-embedded Human muscle using Collagen XII alpha 1 antibody. High-pressure and temperature Sodium Citrate pH 6.0 was used for antigen retrieval.