

## Product datasheet for **TA384022S**

### COG6 Rabbit Monoclonal Antibody [Clone ID: R09-6K8]

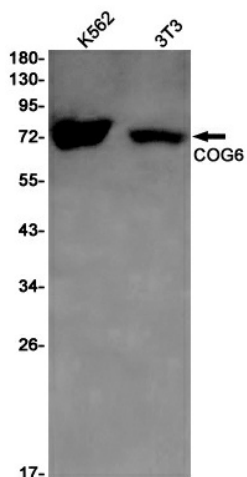
#### Product data:

Product Type:	Primary Antibodies
Clone Name:	R09-6K8
Applications:	WB
Recommended Dilution:	WB: 1/1000
Reactivity:	Human, Mouse
Host:	Rabbit
Isotype:	IgG
Clonality:	Monoclonal
Immunogen:	A synthetic peptide of human COG6
Formulation:	50mM Tris-Glycine(pH 7.4), 0.15M NaCl, 40% Glycerol, 0.01% Sodium azide and 0.05% BSA
Concentration:	lot specific
Purification:	Affinity Purified
Conjugation:	Unconjugated
Storage:	Store at 4°C short term. Aliquot and store at -20°C long term. Avoid freeze/thaw cycles.
Stability:	1 year
Predicted Protein Size:	Calculated MW: 73 kDa; Observed MW: 73 kDa
Gene Name:	component of oligomeric golgi complex 6
Database Link:	<a href="#">Entrez Gene 57511 Human Q9Y2V7</a>
Background:	Swiss-Prot Acc.Q9Y2V7.Required for normal Golgi function.
Synonyms:	COD2; DKFZp313D191; KIAA1134



[View online »](#)

## Product images:



Western blot detection of COG6 in K562,3T3 cell lysates using COG6 Rabbit mAb(1:1000 diluted).Predicted band size:73kDa.Observed band size:73kDa.