

## Product datasheet for **TA384019**

### CNGB1 Rabbit Polyclonal Antibody

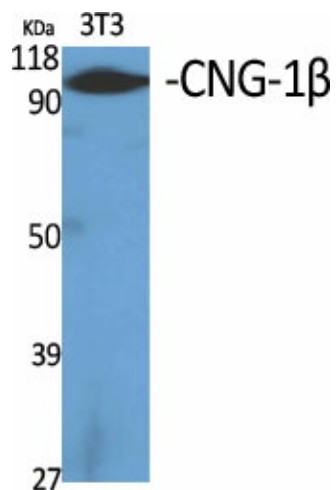
#### Product data:

Product Type:	Primary Antibodies
Applications:	ELISA, WB
Recommended Dilution:	WB: 1/500-1/2000 ELISA: 1/10000
Reactivity:	Human, Mouse, Rat
Host:	Rabbit
Isotype:	IgG
Clonality:	Polyclonal
Immunogen:	The antiserum was produced against synthesized peptide derived from human CNGB1. AA range:571-620
Formulation:	Liquid in PBS containing 50% glycerol, 0.5% BSA and 0.02% sodium azide, pH 7.3.
Concentration:	lot specific
Purification:	Affinity Chromatography
Conjugation:	Unconjugated
Storage:	Store at 4°C short term. Aliquot and store at -20°C long term. Avoid freeze/thaw cycles.
Stability:	1 year
Predicted Protein Size:	Observed MW (kDa):102
Database Link:	<a href="#">Q14028</a>
Background:	Swiss-Prot Acc.Q14028.Subunit of cyclic nucleotide-gated (CNG) channels, nonselective cation channels, which play important roles in both visual and olfactory signal transduction. When associated with CNGA1, it is involved in the regulation of ion flow into the rod photoreceptor outer segment (ROS), in response to light-induced alteration of the levels of intracellular cGMP.Isoform GARP2 is a high affinity rod photoreceptor phosphodiesterase (PDE6)-binding protein that modulates its catalytic properties: it is a regulator of spontaneous activation of rod PDE6, thereby serving to lower rod photoreceptor 'dark noise' and allowing these sensory cells to operate at the single photon detection limit.SitesFeature keyPosition(s)Description

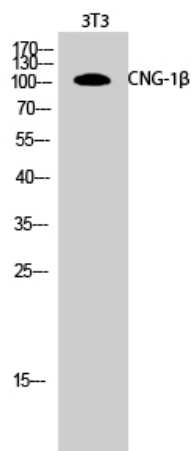


[View online »](#)

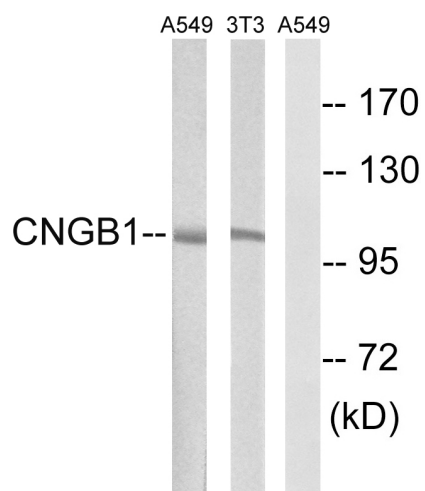
## Product images:



Western blot analysis of CNGB1 in various lysates using CNGB1 antibody.



Western blot analysis of CNGB1 in 3T3 lysates using CNG1 $\beta$  antibody.



Western blot analysis of CNGB1 in NIH/3T3 and A549 lysates using CNGB1 antibody. The lane on the right is blocked with the synthesized peptide.