

## Product datasheet for **TA384018**

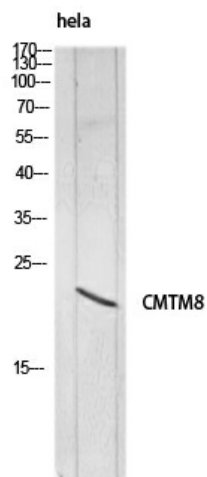
### CMTM8 Rabbit Polyclonal Antibody

#### Product data:

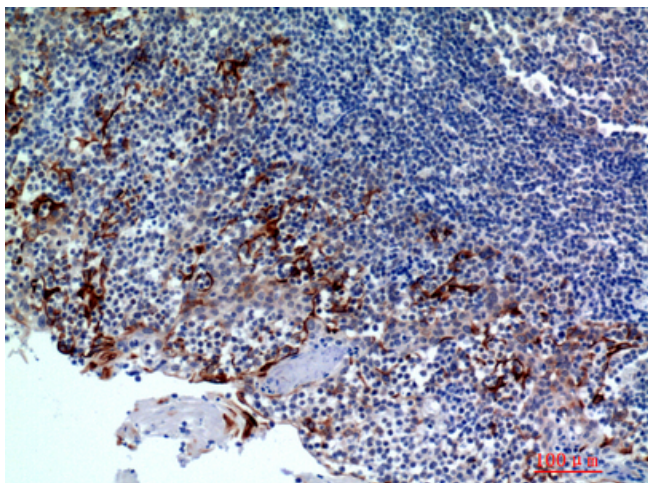
Product Type:	Primary Antibodies
Applications:	ELISA, IHC, WB
Recommended Dilution:	WB: 1/500-1/2000 IHC-p: 1/100-1/300 ELISA: 1/10000
Reactivity:	Human
Host:	Rabbit
Isotype:	IgG
Clonality:	Polyclonal
Immunogen:	The antiserum was produced against synthesized peptide derived from the Internal region of human CMTM8. AA range:101-150
Formulation:	Liquid in PBS containing 50% glycerol, 0.5% BSA and 0.02% sodium azide, pH 7.3.
Concentration:	lot specific
Purification:	Affinity Purified
Conjugation:	Unconjugated
Storage:	Store at 4°C short term. Aliquot and store at -20°C long term. Avoid freeze/thaw cycles.
Stability:	1 year
Predicted Protein Size:	Observed MW (kDa):20
Database Link:	<a href="#">Q8IZV2</a>
Background:	Swiss-Prot Acc.Q8IZV2.



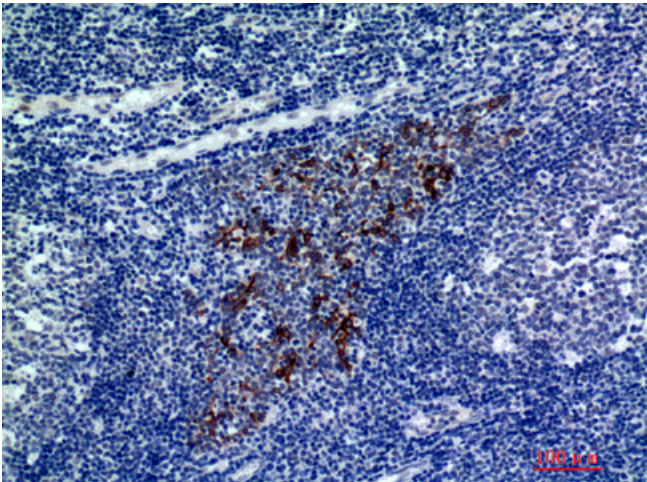
[View online »](#)

**Product images:**

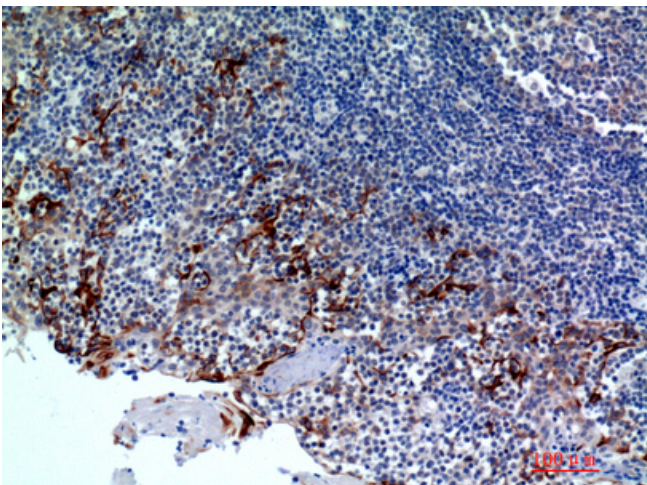
Western blot analysis of CMTM8 in hela lysates using CMTM8 antibody.



Immunohistochemistry analysis of paraffin-embedded Human tonsils using CMTM8 antibody. High-pressure and temperature Sodium Citrate pH 6.0 was used for antigen retrieval.



Immunohistochemistry analysis of paraffin-embedded Human tonsils using CMTM8 antibody. High-pressure and temperature Sodium Citrate pH 6.0 was used for antigen retrieval.



Immunohistochemistry analysis of paraffin-embedded Human tonsils2 using CMTM8 antibody. High-pressure and temperature Sodium Citrate pH 6.0 was used for antigen retrieval.