

## Product datasheet for **TA384015M**

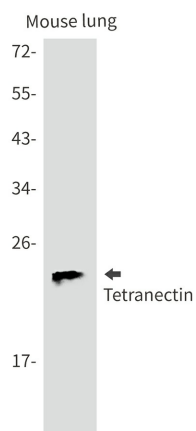
### **Tetranectin (CLEC3B) Rabbit Monoclonal Antibody [Clone ID: R08-4I2]**

#### **Product data:**

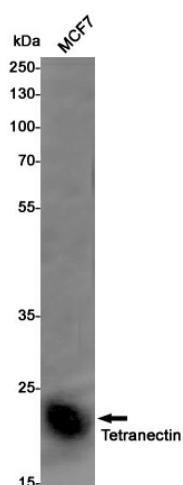
Product Type:	Primary Antibodies
Clone Name:	R08-4I2
Applications:	IHC, IP, WB
Recommended Dilution:	WB: 1/1000-1/5000 IHC: 1/50-1/200 IP: 1/20-1/50
Reactivity:	Human, Mouse
Host:	Rabbit
Isotype:	IgG
Clonality:	Monoclonal
Immunogen:	A synthetic peptide of human Tetranectin
Formulation:	50mM Tris-Glycine(pH 7.4), 0.15M NaCl, 40% Glycerol, 0.01% Sodium azide and 0.05% BSA
Concentration:	lot specific
Purification:	Affinity Purified
Conjugation:	Unconjugated
Storage:	Store at 4°C short term. Aliquot and store at -20°C long term. Avoid freeze/thaw cycles.
Stability:	1 year
Predicted Protein Size:	Calculated MW: 23 kDa; Observed MW: 23 kDa
Gene Name:	C-type lectin domain family 3 member B
Database Link:	<a href="#">Entrez Gene 7123 Human P05452</a>
Background:	Swiss-Prot Acc.P05452.Tetranectin binds to plasminogen and to isolated kringle 4. May be involved in the packaging of molecules destined for exocytosis.
Synonyms:	DKFZp686H17246; TN; TNA

[View online »](#)

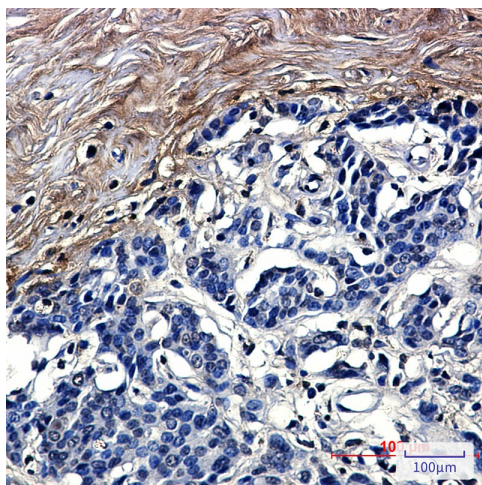
## Product images:



Western blot analysis of Tetranectin in mouse lung lysates using Tetranectin antibody.



Western blot analysis of Tetranectin in MCF-7 lysates using Tetranectin antibody.



Immunohistochemistry analysis of paraffin-embedded Human breast cancer using Tetranectin antibody. High-pressure and temperature Sodium Citrate pH 6.0 was used for antigen retrieval.