

## Product datasheet for **TA384012S**

### Claudin 5 (CLDN5) Rabbit Polyclonal Antibody

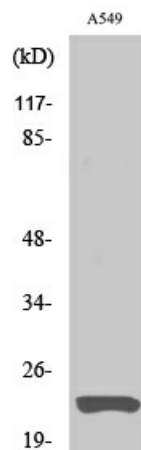
#### Product data:

Product Type:	Primary Antibodies
Applications:	ELISA, IF, IHC, WB
Recommended Dilution:	WB: 1/500-1/2000 IHC: 1/100-1/300 IF: 1/200-1/1000 ELISA: 1/40000
Reactivity:	Human, Mouse
Host:	Rabbit
Isotype:	IgG
Clonality:	Polyclonal
Immunogen:	The antiserum was produced against synthesized peptide derived from human Claudin 5. AA range:169-218
Formulation:	Liquid in PBS containing 50% glycerol, 0.5% BSA and 0.02% sodium azide, pH 7.3.
Concentration:	lot specific
Purification:	Affinity Purified
Conjugation:	Unconjugated
Storage:	Store at 4°C short term. Aliquot and store at -20°C long term. Avoid freeze/thaw cycles.
Stability:	1 year
Predicted Protein Size:	Observed MW (kDa):23
Gene Name:	claudin 5
Database Link:	<a href="#">Entrez Gene 7122 Human O00501</a>
Background:	Swiss-Prot Acc.O00501.
Synonyms:	AWAL; BEC1; CPETRL1; OTTHUMP00000197372; OTTHUMP00000197819; TMDVCF; TMVCF



[View online »](#)

## Product images:



Western blot analysis of Claudin 5 in A549 lysates using Claudin 5 antibody.