

Product datasheet for **TA384011**

Claudin 4 (CLDN4) Rabbit Polyclonal Antibody

Product data:

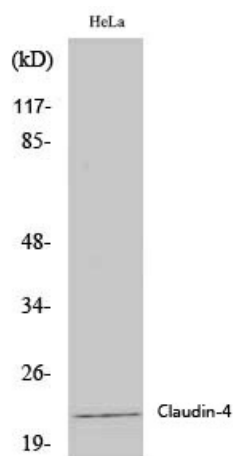
Product Type:	Primary Antibodies
Applications:	ELISA, IF, IHC, WB
Recommended Dilution:	WB: 1/500-1/2000 IHC-P: 1/100-1/300 ICC/IF: 1/200-1/1000 ELISA: 1/5000
Reactivity:	Human, Mouse, Rat
Host:	Rabbit
Isotype:	IgG
Clonality:	Polyclonal
Immunogen:	The antiserum was produced against synthesized peptide derived from human Claudin 4. AA range:160-209
Formulation:	Liquid in PBS containing 50% glycerol, 0.5% BSA and 0.02% sodium azide, pH 7.3.
Concentration:	lot specific
Purification:	Affinity Chromatography
Conjugation:	Unconjugated
Storage:	Store at 4°C short term. Aliquot and store at -20°C long term. Avoid freeze/thaw cycles.
Stability:	1 year
Predicted Protein Size:	Observed MW(kDa):22
Gene Name:	claudin 4
Database Link:	Entrez Gene 1364 Human O14493
Background:	Swiss-Prot Acc.O14493.Channel-forming tight junction protein that mediates paracellular chloride transport in the kidney. Plays a critical role in the paracellular reabsorption of filtered chloride in the kidney collecting ducts. Claudins play a major role in tight junction-specific obliteration of the intercellular space, through calcium-independent cell-adhesion activity.



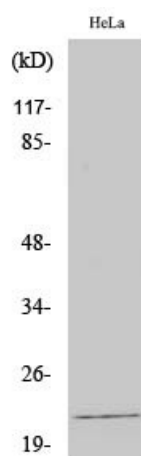
[View online »](#)

Synonyms: CPE-R; CPE-receptor; CPER; CPETR; CPETR1; hCPE-R; OTTHUMP00000160507; OTTHUMP00000211778; WBSCR8

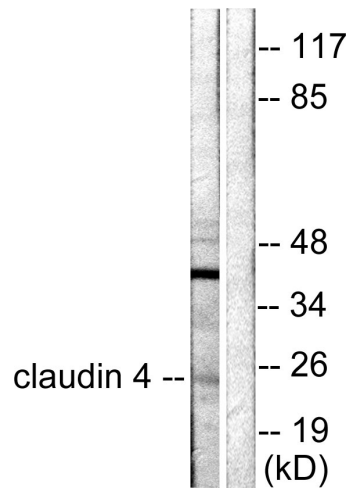
Product images:



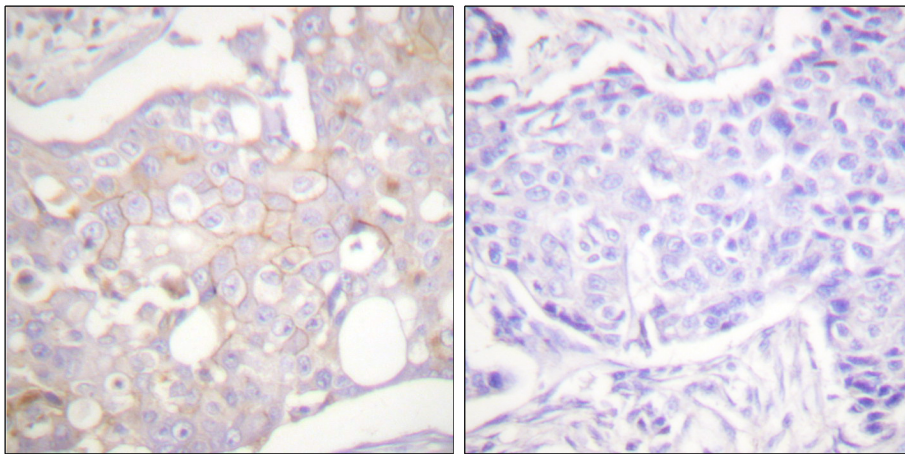
Western blot analysis of Claudin 4 in various lysates using Claudin 4 antibody.



Western blot analysis of Claudin 4 in HeLa lysates using Claudin4 antibody.



Western blot analysis of Claudin 4 in HeLa lysates using Claudin 4 antibody. The lane on the right is blocked with the synthesized peptide.



Immunohistochemistry analysis of paraffin-embedded Human breast carcinoma tissue using Claudin 4 antibody. High-pressure and temperature Sodium Citrate pH 6.0 was used for antigen retrieval.