

Product datasheet for **TA384010**

Claudin 4 (CLDN4) Mouse Monoclonal Antibody [Clone ID: 4A10-7F7-4D8]

Product data:

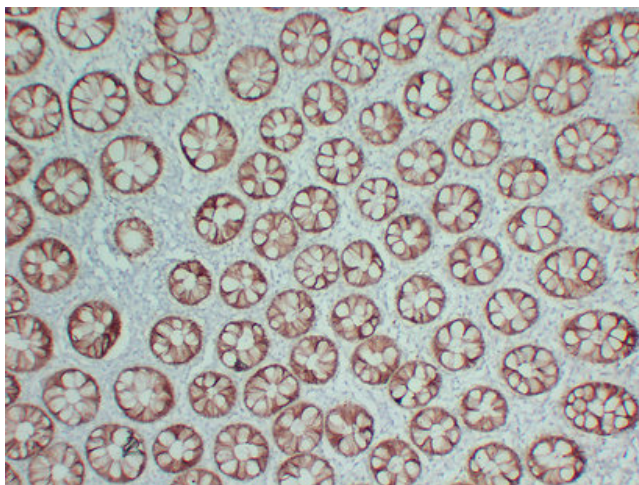
Product Type:	Primary Antibodies
Clone Name:	4A10-7F7-4D8
Applications:	IHC, WB
Recommended Dilution:	IHC-p: 1/100-1/500 WB: 1/500-1/2000
Reactivity:	Human
Host:	Mouse
Isotype:	IgG2b, kappa
Clonality:	Monoclonal
Immunogen:	Synthesized peptide derived from human Claudin 4
Formulation:	Liquid in PBS containing 50% glycerol, 0.5% BSA and 0.02% sodium azide, pH 7.3.
Concentration:	lot specific
Purification:	Affinity Chromatography
Conjugation:	Unconjugated
Storage:	Store at 4°C short term. Aliquot and store at -20°C long term. Avoid freeze/thaw cycles.
Stability:	1 year
Predicted Protein Size:	Observed MW (kDa): 22
Gene Name:	claudin 4
Database Link:	Entrez Gene 1364 Human O14493
Background:	Swiss-Prot Acc.O14493.
Synonyms:	CPE-R; CPE-receptor; CPER; CPETR; CPETR1; hCPE-R; OTTHUMP00000160507; OTTHUMP00000211778; WBSCR8



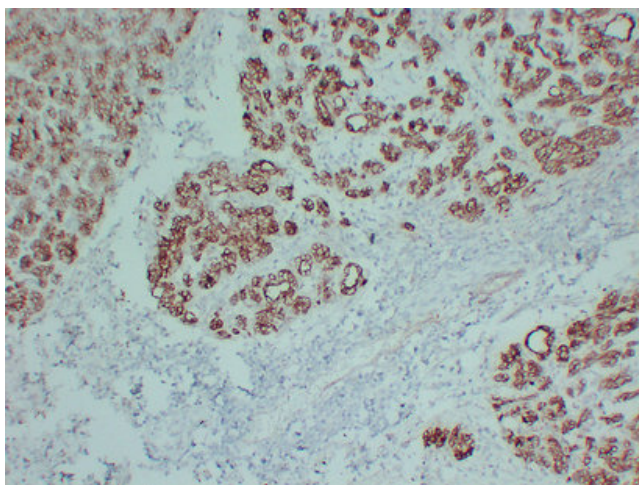
[View online »](#)

Product images:

Immunohistochemical analysis of paraffin-embedded Colon. 1, Antibody was diluted at 1:200(4°,overnight). 2, TRIS-EDTA of pH8.0 was used for antigen retrieval. 3,Secondary antibody was diluted at 1:200(room temperature, 30min).



Immunohistochemical analysis of paraffin-embedded Colon. 1, Antibody was diluted at 1:200(4°,overnight). 2, TRIS-EDTA of pH8.0 was used for antigen retrieval. 3,Secondary antibody was diluted at 1:200(room temperature, 30min).



Immunohistochemical analysis of paraffin-embedded Pancreatic carcinoma. 1, Antibody was diluted at 1:200(4°,overnight). 2, TRIS-EDTA of pH8. was used for antigen retrieval. 3,Secondary antibody was diluted at 1:200(room temperature, 30min).