

## Product datasheet for **TA384009**

### Claudin 3 (CLDN3) Rabbit Monoclonal Antibody [Clone ID: R08-4F8]

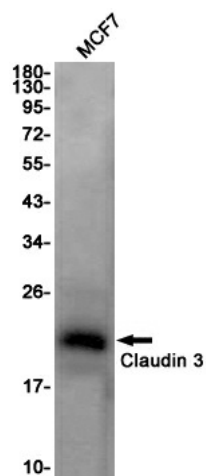
#### Product data:

Product Type:	Primary Antibodies
Clone Name:	R08-4F8
Applications:	IF, IP, WB
Recommended Dilution:	WB: 1/1000 ICC/IF: 1/20 IP: 1/20
Reactivity:	Human
Host:	Rabbit
Isotype:	IgG
Clonality:	Monoclonal
Immunogen:	A synthetic peptide of human Claudin 3
Formulation:	50mM Tris-Glycine(pH 7.4), 0.15M NaCl, 40% Glycerol, 0.01% Sodium azide and 0.05% BSA
Concentration:	lot specific
Purification:	Affinity Purified
Conjugation:	Unconjugated
Storage:	Store at 4°C short term. Aliquot and store at -20°C long term. Avoid freeze/thaw cycles.
Stability:	1 year
Predicted Protein Size:	Calculated MW: 23 kDa; Observed MW: 20 kDa
Gene Name:	claudin 3
Database Link:	<a href="#">Entrez Gene 1365 Human O15551</a>
Background:	Swiss-Prot Acc.O15551.Plays a major role in tight junction-specific obliteration of the intercellular space, through calcium-independent cell-adhesion activity.
Synonyms:	C7orf1; CPE-R2; CPETR2; HRVP1; RVP1



[View online »](#)

## Product images:



Western blot detection of Claudin 3 in MCF7 cell lysates using Claudin 3 Rabbit mAb(1:1000 diluted). Predicted band size:23KDa.Observed band size:20KDa.