

Product datasheet for **TA384005**

CKMT1B Mouse Monoclonal Antibody [Clone ID: 1A6-C7-G10]

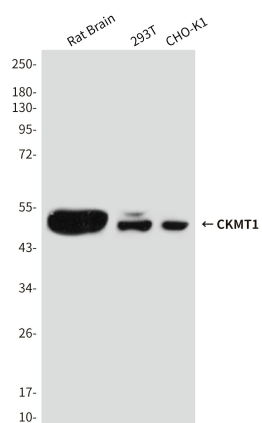
Product data:

Product Type:	Primary Antibodies
Clone Name:	1A6-C7-G10
Applications:	WB
Recommended Dilution:	WB: 1/1000
Reactivity:	Human, Rat
Host:	Mouse
Isotype:	IgG1
Clonality:	Monoclonal
Immunogen:	Purified recombinant human CKMT1 protein fragments expressed in E.coli.
Formulation:	Liquid in PBS containing 50% glycerol, 0.5% BSA and 0.03% Proclin 300, pH 7.3.
Concentration:	lot specific
Purification:	Affinity Purified
Conjugation:	Unconjugated
Storage:	Store at 4°C short term. Aliquot and store at -20°C long term. Avoid freeze/thaw cycles.
Stability:	1 year
Predicted Protein Size:	47kDa
Gene Name:	creatine kinase, mitochondrial 1B
Database Link:	Entrez Gene 1159 Human P12532
Background:	Swiss-Prot Acc.P12532.
Synonyms:	CKMT; CKMT1; Mia-CK; OTTHUMP00000066275; U-MtCK; UMTCK



[View online »](#)

Product images:



Western blot analysis of CKMT1 in rat Brain, 293T and CHO-K1 lysates using CKMT1 antibody.