

## Product datasheet for **TA384004S**

### Creatine kinase B type (CKB) Rabbit Monoclonal Antibody [Clone ID: R03-5I4]

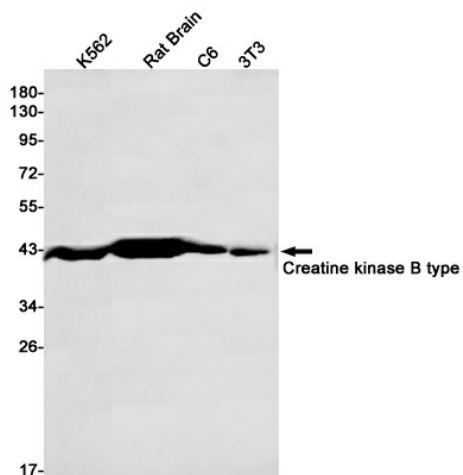
#### Product data:

Product Type:	Primary Antibodies
Clone Name:	R03-5I4
Applications:	IHC, IP, WB
Recommended Dilution:	WB: 1/2000-1/10000 IHC: 1/50 IP: 1/20
Reactivity:	Human, Mouse, Rat
Host:	Rabbit
Isotype:	IgG
Clonality:	Monoclonal
Immunogen:	A synthetic peptide of human Creatine kinase B type
Formulation:	50mM Tris-Glycine(pH 7.4), 0.15M NaCl, 40% Glycerol, 0.01% Sodium azide and 0.05% BSA
Concentration:	lot specific
Purification:	Affinity Purified
Conjugation:	Unconjugated
Storage:	Store at 4°C short term. Aliquot and store at -20°C long term. Avoid freeze/thaw cycles.
Stability:	1 year
Predicted Protein Size:	Calculated MW: 43 kDa; Observed MW: 43 kDa
Gene Name:	creatine kinase B
Database Link:	<a href="#">Entrez Gene 1152 Human P12277</a>
Background:	Swiss-Prot Acc.P12277.Reversibly catalyzes the transfer of phosphate between ATP and various phosphagens (e.g. creatine phosphate). Creatine kinase isoenzymes play a central role in energy transduction in tissues with large, fluctuating energy demands, such as skeletal muscle, heart, brain and spermatozoa.
Synonyms:	B-CK; CKBB

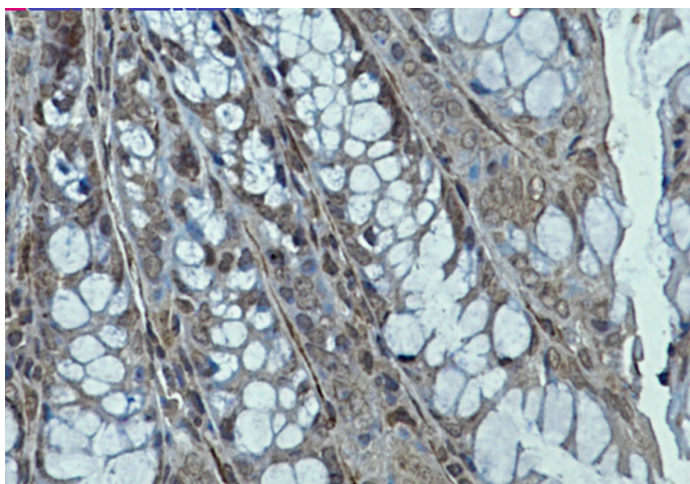


[View online »](#)

## Product images:



Western blot detection of Creatine kinase B type in K562, Rat Brain, C6, 3T3 cell lysates using Creatine kinase B type Rabbit mAb(1:1000 diluted). Predicted band size: 43kDa. Observed band size: 43kDa.



Immunohistochemistry analysis of paraffin-embedded mouse colon using Creatine Kinase B type antibody. High-pressure and temperature Sodium Citrate pH 6.0 was used for antigen retrieval.