

## Product datasheet for **TA384002M**

### CIRBP Rabbit Monoclonal Antibody [Clone ID: R01-4B2]

#### Product data:

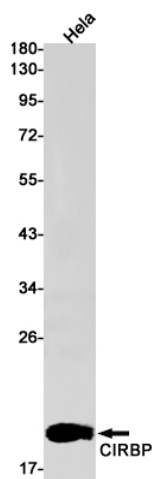
Product Type:	Primary Antibodies
Clone Name:	R01-4B2
Applications:	IHC, IP, WB
Recommended Dilution:	WB: 1/1000 IHC: 1/200 IP: 1/20
Reactivity:	Human
Host:	Rabbit
Isotype:	IgG
Clonality:	Monoclonal
Immunogen:	Recombinant protein of human CIRBP
Formulation:	50mM Tris-Glycine(pH 7.4), 0.15M NaCl, 40% Glycerol, 0.01% Sodium azide and 0.05% BSA
Concentration:	lot specific
Purification:	Affinity Purified
Conjugation:	Unconjugated
Storage:	Store at 4°C short term. Aliquot and store at -20°C long term. Avoid freeze/thaw cycles.
Stability:	1 year
Predicted Protein Size:	Calculated MW: 19 kDa; Observed MW: 19 kDa
Gene Name:	cold inducible RNA binding protein
Database Link:	<a href="#">Entrez Gene 1153 Human Q14011</a>
Background:	Swiss-Prot Acc.Q14011.Cold-inducible mRNA binding protein that plays a protective role in the genotoxic stress response by stabilizing transcripts of genes involved in cell survival. Acts as a translational activator. Seems to play an essential role in cold-induced suppression of cell proliferation. Binds specifically to the 3'-untranslated regions (3'-UTRs) of stress-responsive transcripts RPA2 and TXN. Acts as a translational repressor . Promotes assembly of stress granules (SGs), when overexpressed.



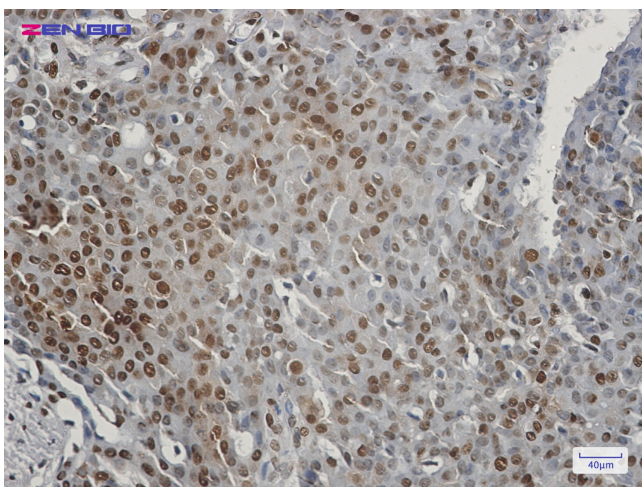
[View online »](#)

**Synonyms:** A18HNRNP; CIRP

**Product images:**



Western blot detection of CIRBP in HeLa cell lysates using CIRBP Rabbit mAb(1:1000 diluted). Predicted band size:19kDa. Observed band size:19kDa.



Immunohistochemistry of CIRBP in paraffin-embedded Human breast cancer tissue using CIRBP Rabbit mAb at dilution 1/50