

Product datasheet for **TA384001M**

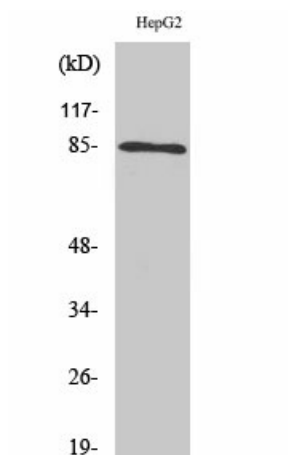
IKK alpha (CHUK) Rabbit Polyclonal Antibody

Product data:

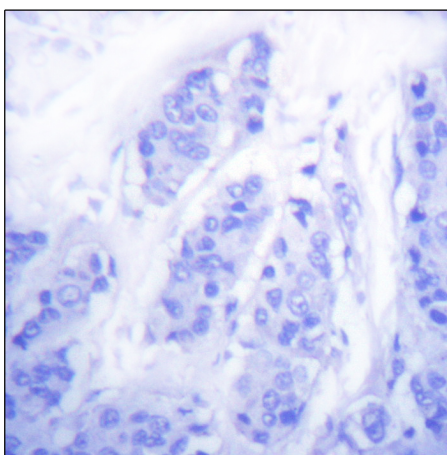
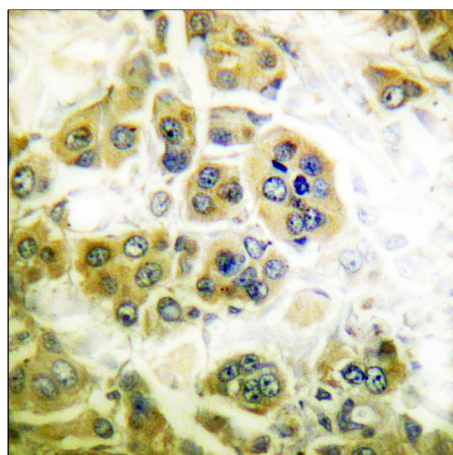
Product Type:	Primary Antibodies
Applications:	ELISA, IHC, WB
Recommended Dilution:	WB: 1/500-1/2000 IHC: 1/100-1/300 ELISA: 1/20000
Reactivity:	Human, Mouse, Rat
Host:	Rabbit
Isotype:	IgG
Clonality:	Polyclonal
Immunogen:	The antiserum was produced against synthesized peptide derived from human IKK-alpha/beta. AA range:141-190
Formulation:	Liquid in PBS containing 50% glycerol, 0.5% BSA and 0.02% sodium azide, pH 7.3.
Concentration:	lot specific
Purification:	Affinity Chromatography
Conjugation:	Unconjugated
Storage:	Store at 4°C short term. Aliquot and store at -20°C long term. Avoid freeze/thaw cycles.
Stability:	1 year
Predicted Protein Size:	Observed MW (kDa):85
Gene Name:	conserved helix-loop-helix ubiquitous kinase
Database Link:	Entrez Gene 1147 Human O15111
Background:	Swiss-Prot Acc.O15111/O14920.CHUK encodes a member of the serine/threonine protein kinase family. Inhibitor of nuclear factor kappa-B kinase subunit alpha, a component of a cytokine-activated protein complex that is an inhibitor of the essential transcription factor NF-kappa-B complex, phosphorylates sites that trigger the degradation of the inhibitor via the ubiquitination pathway, thereby activating the transcription factor.
Synonyms:	IkBKA; IKK-A; IKK-alpha; IKK1; IKKA; NFKBIKA; TCF16


[View online »](#)

Product images:



Western blot analysis of IKK alpha/beta in HepG2 lysates using IKK alpha/beta antibody.



Immunohistochemistry analysis of paraffin-embedded Human breast carcinoma tissue, using IKKalpha/beta antibody. High-pressure and temperature Sodium Citrate pH 6.0 was used for antigen retrieval. Sample with blocking peptide on the right.