

Product datasheet for **TA383998M**

CHRM2 Rabbit Monoclonal Antibody [Clone ID: R01-9B9]

Product data:

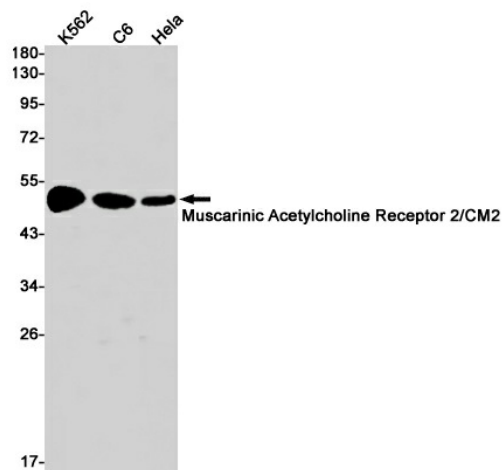
Product Type:	Primary Antibodies
Clone Name:	R01-9B9
Applications:	IHC, IP, WB
Recommended Dilution:	WB: 1/1000-1/5000 IHC: 1/20-1/100 IP: 1/20-1/50
Reactivity:	Human, Rat
Host:	Rabbit
Isotype:	IgG
Clonality:	Monoclonal
Immunogen:	A synthetic peptide of human Muscarinic Acetylcholine Receptor 2
Formulation:	50mM Tris-Glycine(pH 7.4), 0.15M NaCl, 40% Glycerol, 0.01% Sodium azide and 0.05% BSA
Concentration:	lot specific
Purification:	Affinity Purified
Conjugation:	Unconjugated
Storage:	Store at 4°C short term. Aliquot and store at -20°C long term. Avoid freeze/thaw cycles.
Stability:	1 year
Predicted Protein Size:	Calculated MW: 52 kDa; Observed MW: 52 kDa
Gene Name:	cholinergic receptor muscarinic 2
Database Link:	Entrez Gene 1129 Human P08172
Background:	Swiss-Prot Acc.P08172.The muscarinic acetylcholine receptor mediates various cellular responses, including inhibition of adenylate cyclase, breakdown of phosphoinositides and modulation of potassium channels through the action of G proteins. Primary transducing effect is adenylate cyclase inhibition. Signaling promotes phospholipase C activity, leading to the release of inositol trisphosphate (IP3); this then triggers calcium ion release into the cytosol.



[View online »](#)

Synonyms: FLJ43243; HM2; MGC120006; MGC120007; OTTHUMP00000208394; OTTHUMP00000208395

Product images:



Western blot analysis of Muscarinic Acetylcholine Receptor 2/CM2 in K562, C6, HeLa lysates using Muscarinic Acetylcholine Receptor M2 antibody.