

## Product datasheet for **TA383995**

### Chk2 (CHEK2) Rabbit Polyclonal Antibody

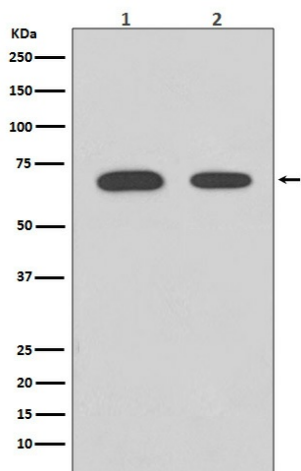
#### Product data:

|                         |   |
|-------------------------|---|
| Product Type:           | Primary Antibodies  |
| Applications:           | IF, IHC, IP, WB   |
| Recommended Dilution:   | WB: 1/10000-1/20000<br>IHC: 1/50-1/200<br>ICC/IF: 1/50-1/200<br>IP: 1/50  |
| Reactivity:             | Human   |
| Host:                   | Rabbit  |
| Isotype:                | IgG   |
| Clonality:              | Polyclonal  |
| Immunogen:              | A synthesized peptide derived from human Chk2   |
| Formulation:            | Rabbit IgG in phosphate buffered saline , pH 7.4, 150mM NaCl, 0.02% sodium azide and 50% glycerol.  |
| Concentration:          | lot specific  |
| Purification:           | Affinity Chromatography   |
| Conjugation:            | Unconjugated  |
| Storage:                | Store at 4°C short term. Aliquot and store at -20°C long term. Avoid freeze/thaw cycles.  |
| Stability:              | 1 year  |
| Predicted Protein Size: | 62kDa   |
| Gene Name:              | checkpoint kinase 2   |
| Database Link:          | <a href="#">Entrez Gene 11200 Human O96017</a>  |
| Background:             | Swiss-Prot Acc.O96017.These are known to be preferred sites for phosphorylation by ATM/ATR kinases. After DNA damage by ionizing radiation (IR), UV irradiation, or hydroxyurea treatment, Thr68 and other sites in this region become phosphorylated by ATM/ATR. The SQ/TQ cluster domain, therefore, seems to have a regulatory function. |
| Synonyms:               | bA444G7; CDS1; CHK2; HuCds1; LFS2; OTTHUMP00000199044; OTTHUMP00000199045; OTTHUMP00000199116; PP1425; RAD53  |

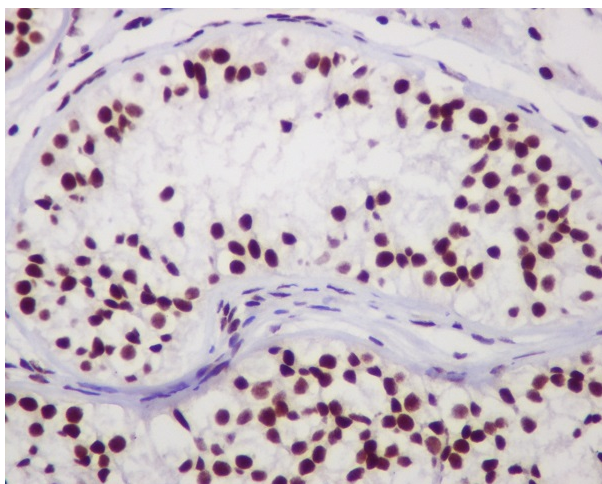


[View online »](#)

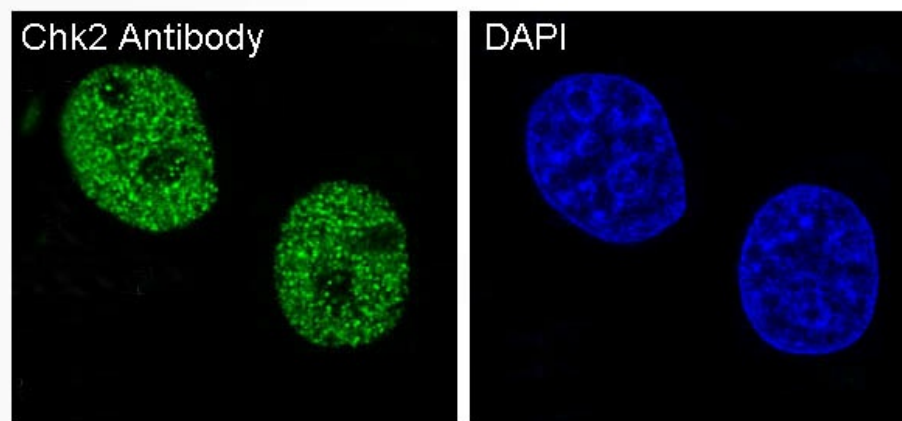
## Product images:



Western blot analysis of Chk2 in (1) HeLa lysates; (2) 293T lysates using Chk2 antibody.



Immunohistochemistry analysis of paraffin-embedded Human testis using Chk2 antibody. High-pressure and temperature Sodium Citrate pH 6.0 was used for antigen retrieval.



Immunofluorescence analysis of Chk2 in HeLa using Chk2 antibody.