

## Product datasheet for **TA383994M**

### Chk2 (CHEK2) Rabbit Polyclonal Antibody

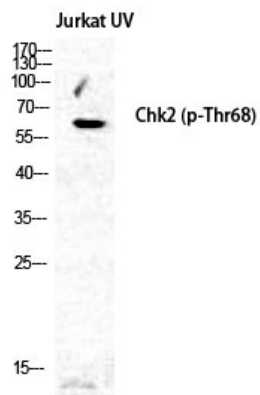
#### Product data:

Product Type:	Primary Antibodies
Applications:	IF, IHC, WB
Recommended Dilution:	WB: 1/500-1/2000 ICC/IF: 1/50-1/200 IHC-P: 1/100-1/200
Reactivity:	Human, Mouse, Rat
Host:	Rabbit
Isotype:	IgG
Clonality:	Polyclonal
Immunogen:	The antiserum was produced against synthesized peptide derived from human Chk2 around the phosphorylation site of Thr68. AA range:35-84 (Phosphorylated)
Formulation:	Liquid in PBS containing 50% glycerol, 0.5% BSA and 0.02% sodium azide, pH 7.3.
Concentration:	lot specific
Purification:	Affinity Purified
Conjugation:	Unconjugated
Storage:	Store at 4°C short term. Aliquot and store at -20°C long term. Avoid freeze/thaw cycles.
Stability:	1 year
Predicted Protein Size:	61 kDa
Gene Name:	checkpoint kinase 2
Database Link:	<a href="#">Entrez Gene 11200 Human O96017</a>
Background:	Swiss-Prot Acc.O96017.
Synonyms:	bA444G7; CDS1; CHK2; HuCds1; LFS2; OTTHUMP00000199044; OTTHUMP00000199045; OTTHUMP00000199116; PP1425; RAD53



[View online »](#)

## Product images:



Western blot analysis of Phospho-Chk2(Thr68) in Jurkat treated with UV lysates using Phospho-Chk2 (Thr68) antibody.