

## Product datasheet for **TA383991**

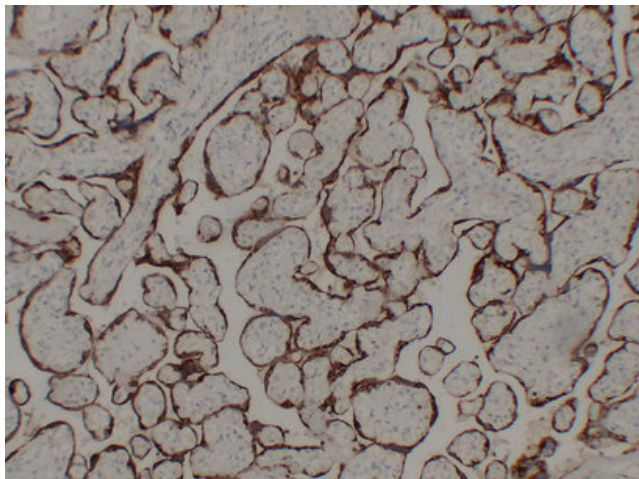
### **hCG (CGA) Mouse Monoclonal Antibody [Clone ID: 8G4-7B4-8A10]**

#### **Product data:**

Product Type:	Primary Antibodies
Clone Name:	8G4-7B4-8A10
Applications:	IHC
Recommended Dilution:	IHC-p: 1/100-1/500
Reactivity:	Human
Host:	Mouse
Isotype:	IgG
Clonality:	Monoclonal
Immunogen:	Synthesized peptide derived from human hCG
Formulation:	Liquid in PBS containing 50% glycerol, 0.5% BSA and 0.02% sodium azide, pH 7.3.
Concentration:	lot specific
Purification:	Affinity Chromatography
Conjugation:	Unconjugated
Storage:	Store at 4°C short term. Aliquot and store at -20°C long term. Avoid freeze/thaw cycles.
Stability:	1 year
Gene Name:	glycoprotein hormones, alpha polypeptide
Database Link:	<a href="#">Entrez Gene 1081 Human P01215</a>
Background:	Swiss-Prot Acc.P01215.
Synonyms:	CG-alpha; FSH-alpha; FSHA; GPHa; GPHA1; HCG; LHA; LSH-alpha; TSH-alpha; TSHA



[View online »](#)

**Product images:**

Immunohistochemical analysis of paraffin-embedded Placenta. 1, Antibody was diluted at 1:200(4°,overnight). 2, Tris-EDTA,pH8.0 was used for antigen retrieval. 3,Secondary antibody was diluted at 1:200(room temperature, 30min).