

Product datasheet for **TA383989**

CEACAM3 Rabbit Polyclonal Antibody

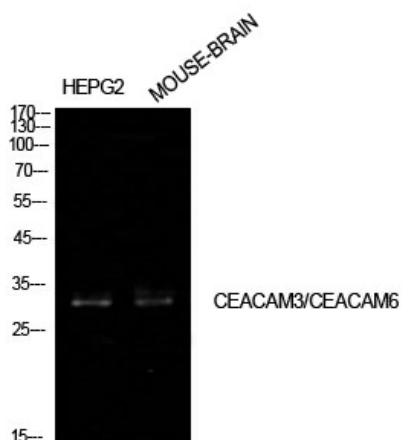
Product data:

Product Type:	Primary Antibodies
Applications:	ELISA, WB
Recommended Dilution:	WB: 1/500-1/2000 ELISA: 1/10000
Reactivity:	Human
Host:	Rabbit
Isotype:	IgG
Clonality:	Polyclonal
Immunogen:	The antiserum was produced against synthesized peptide derived from the Internal region of human CEACAM3/CEACAM6. AA range:31-80
Formulation:	Liquid in PBS containing 50% glycerol, 0.5% BSA and 0.02% sodium azide, pH 7.3.
Concentration:	lot specific
Purification:	Affinity Purified
Conjugation:	Unconjugated
Storage:	Store at 4°C short term. Aliquot and store at -20°C long term. Avoid freeze/thaw cycles.
Stability:	1 year
Predicted Protein Size:	Observed MW (kDa):30
Gene Name:	carcinoembryonic antigen related cell adhesion molecule 3
Database Link:	Entrez Gene 1084 Human P40198
Background:	Swiss-Prot Acc.P40198/P40199.
Synonyms:	CD66D; CEA; CGM1; MGC119875; W264; W282

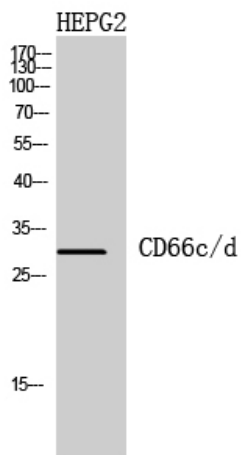


[View online »](#)

Product images:



Western blot analysis of CEACAM6 in HepG2, mouse brain lysates using CEACAM6 antibody.



Western blot analysis of CEACAM6 in HEPG2 lysates using CD66c/d antibody.