

Product datasheet for **TA383988**

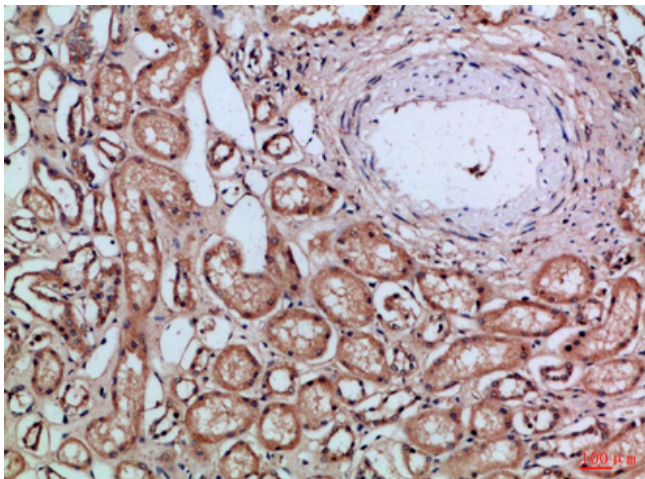
CEACAM1 Rabbit Polyclonal Antibody

Product data:

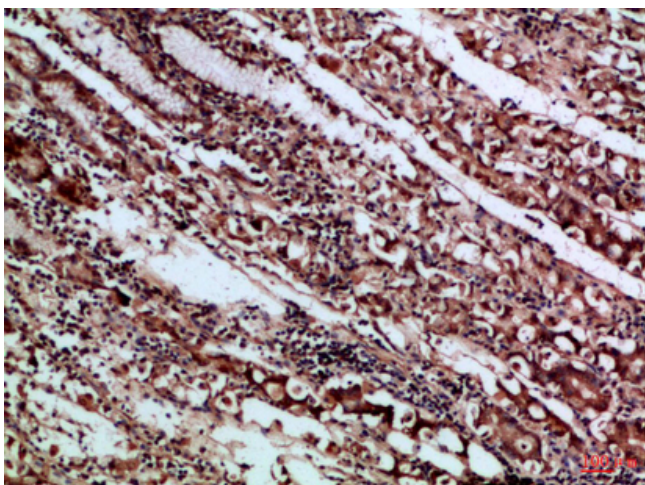
Product Type:	Primary Antibodies
Applications:	ELISA, IHC
Recommended Dilution:	IHC-p: 1/50-1/200
Reactivity:	Human
Host:	Rabbit
Isotype:	IgG
Clonality:	Polyclonal
Immunogen:	Synthetic peptide from human protein at AA range: 130-190
Formulation:	Liquid in PBS containing 50% glycerol, 0.5% BSA and 0.02% sodium azide, pH 7.3.
Concentration:	lot specific
Purification:	Affinity Purified
Conjugation:	Unconjugated
Storage:	Store at 4°C short term. Aliquot and store at -20°C long term. Avoid freeze/thaw cycles.
Stability:	1 year
Gene Name:	carcinoembryonic antigen related cell adhesion molecule 1
Database Link:	Entrez Gene 634 Human P13688
Background:	Swiss-Prot Acc.P13688/P40199/P31997.
Synonyms:	BGP; BGP-1; BGP1; BGPI; CD66a



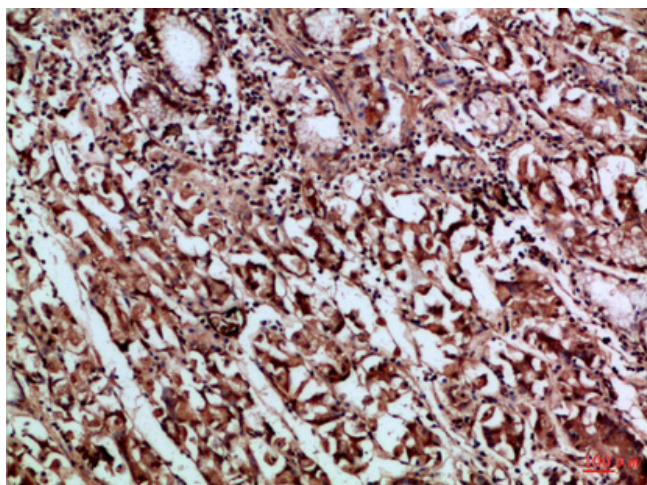
[View online »](#)

Product images:

Immunohistochemistry analysis of paraffin-embedded Human kidney using CD66a/b/c antibody. High-pressure and temperature Sodium Citrate pH 6.0 was used for antigen retrieval.



Immunohistochemical analysis of paraffin-embedded Human tonsils using CD66a/b/c antibody. High-pressure and temperature Sodium Citrate pH 6.0 was used for antigen retrieval.



Immunohistochemistry analysis of paraffin-embedded Human stomach using CD66a/b/c antibody. High-pressure and temperature Sodium Citrate pH 6.0 was used for antigen retrieval.